

## Verification Report

No. CANEC2110630001

Date: 27 Jul 2021

Page 1 of 85

HARMAN INTERNATIONAL INDUSTRIES, INCORPORATED  
8500 BALBOA BLVD, NORTHRIDGE, CA 91329, UNITED STATES

Sample Name : Portable Bluetooth Speaker  
SGS Job No. : CP21-031107 - SZ  
Model No. : GO ESSENTIAL  
Brand : JBL  
Manufacturer : ANAM ELECTRONICS VIETNAM CO., LTD  
Manufacturer Address : Dong Van IV Industrial Park, Dai Cuong Commune, Kim Bang Dist, Ha Nam Province, Vietnam  
Country of Origin : Vietnam  
Country of Destination : Global  
Date of Sample Received : 15 Jun 2021  
Verification Period : 15 Jun 2021 - 27 Jul 2021  
Verification Requested : With reference to RoHS Directive (EU) 2015/863 amending 2011/65/EU.  
Verification Method : Please refer to next page(s).  
Verification Result : Please refer to next page(s).  
Verification Conclusion : Based on the verification results of the submitted samples, the results of Lead, Mercury, Cadmium, Hexavalent chromium, Polybrominated biphenyls (PBBs), Polybrominated diphenyl ethers (PBDEs) and Phthalates such as Bis(2-ethylhexyl) phthalate (DEHP) , Butyl benzyl phthalate (BBP), Dibutyl phthalate (DBP) , and Diisobutyl phthalate (DIBP) comply with the limits as set by RoHS Directive (EU) 2015/863 amending Annex II to Directive 2011/65/EU.

Signed for and on behalf of  
SGS-CSTC Standards Technical Services Co., Ltd. Guangzhou Branch

*Tyler Zhang*

Tyler Zhang  
Approved Signatory

scan to see the report



CANEC2110630001



SGS-CSTC Standards Technical Services Co., Ltd.  
Guangzhou Branch Testing Center Chemical Laboratory.

Unless otherwise agreed in writing, this document is issued by the Company subject to its General Conditions of Service printed overleaf, available on request or accessible at <http://www.sgs.com/en/Terms-and-Conditions.aspx> and, for electronic format documents, subject to Terms and Conditions for Electronic Documents at <http://www.sgs.com/en/Terms-and-Conditions/Terms-e-Documents.aspx>. Attention is drawn to the limitation of liability, indemnification and jurisdiction issues defined therein. Any holder of this document is advised that information contained hereon reflects the Company's findings at the time of its intervention only and within the limits of Client's instructions, if any. The Company's sole responsibility is to its Client and this document does not exonerate parties to a transaction from exercising all their rights and obligations under the transaction documents. This document cannot be reproduced except in full, without prior written approval of the Company. Any unauthorized alteration, forgery or falsification of the content or appearance of this document is unlawful and offenders may be prosecuted to the fullest extent of the law. Unless otherwise stated the results shown in this test report refer only to the sample(s) tested.

Attention: To check the authenticity of testing / inspection report & certificate, please contact us at telephone: (86-755) 8307 1443, or email: [CN.Doccheck@sgs.com](mailto:CN.Doccheck@sgs.com)

198 Kezhu Road, Sciencetech Park Guangzhou Economic & Technology Development District, Guangzhou, China 510663  
中国·广州·经济技术开发区科学城科珠路198号 邮编: 510663

t (86-20) 82155555 www.sgs.com.cn  
t (86-20) 82155555 sgs.china@sgs.com

## Verification Report

No. CANEC2110630001

Date: 27 Jul 2021

Page 2 of 85

### Verification Method :

1. With reference to IEC 62321-2:2013, review was performed for the samples disjointed from the submitted articles.
2. With reference to IEC 62321-1:2013, tests were performed for the samples indicated by the photos in this report
  - (1) With reference to IEC 62321-3-1:2013, screening by EDXRF spectroscopy.
  - (2) Wet chemical test method: With reference to IEC 62321-4:2013+A1:2017, IEC62321-5:2013, IEC 62321-7-1:2015, IEC 62321-7-2:2017, ISO 17075-1:2017, IEC 62321-6:2015 and IEC62321-8:2017, analyzed by ICP-OES,UV-Vis and GC-MS.



SGS-CSTC Standards Technical Services Co., Ltd.  
Guangzhou Branch Testing Center Chemical Laboratory.

Unless otherwise agreed in writing, this document is issued by the Company subject to its General Conditions of Service printed overleaf, available on request or accessible at <http://www.sgs.com/en/Terms-and-Conditions.aspx> and, for electronic format documents, subject to Terms and Conditions for Electronic Documents at <http://www.sgs.com/en/Terms-and-Conditions/Terms-e-Documents.aspx>. Attention is drawn to the limitation of liability, indemnification and jurisdiction issues defined therein. Any holder of this document is advised that information contained hereon reflects the Company's findings at the time of its intervention only and within the limits of Client's instructions, if any. The Company's sole responsibility is to its Client and this document does not exonerate parties to a transaction from exercising all their rights and obligations under the transaction documents. This document cannot be reproduced except in full, without prior written approval of the Company. Any unauthorized alteration, forgery or falsification of the content or appearance of this document is unlawful and offenders may be prosecuted to the fullest extent of the law. Unless otherwise stated the results shown in this test report refer only to the sample(s) tested.

Attention: To check the authenticity of testing / inspection report & certificate, please contact us at telephone: (86-755) 8307 1443, or email: [CN.Doccheck@sgs.com](mailto:CN.Doccheck@sgs.com)

198 Kezhu Road, Sciencetech Park Guangzhou Economic & Technology Development District, Guangzhou, China 510663

中国·广州·经济技术开发区科学城科珠路198号

邮编: 510663

t (86-20) 82155555 [www.sgsgroup.com.cn](http://www.sgsgroup.com.cn)

t (86-20) 82155555 [sgs.china@sgs.com](mailto:sgs.china@sgs.com)

In accordance with the result of material risk assessment, the following disjointed parts in the submitted sample have been verified.

Part No.	Part Description	Restricted Substances	Results of EDXRF <sup>(1)</sup>	Screening Result of PHTH <sup>(2)</sup>	Result of Wet Chemical Testing <sup>(3)</sup> (mg/kg)	Conclusion	Sample Submitted / Resubmitted Date
1	Black rubber shell	Pb	BL	---	---	Comply	15 Jun 2021
		Cd	BL	---	---	Comply	
		Hg	BL	---	---	Comply	
		Cr(VI)▼	BL	---	---	Comply	
		PBBs	BL	---	---	Comply	
		PBDEs	BL	---	---	Comply	
		DBP	---	BL	---	Comply	
		BBP	---	BL	---	Comply	
		DEHP	---	BL	---	Comply	
DIBP	---	BL	---	Comply			
2	Black surfaced metal net w/white printing	Pb	BL	---	---	Comply	15 Jun 2021
		Cd	BL	---	---	Comply	
		Hg	BL	---	---	Comply	
		Cr(VI)▼	BL	---	---	Comply	
		PBBs	---	---	---	---	
		PBDEs	---	---	---	---	
		DBP	---	---	---	---	
		BBP	---	---	---	---	
		DEHP	---	---	---	---	
DIBP	---	---	---	---			
3	Black plastic frame	Pb	BL	---	---	Comply	15 Jun 2021
		Cd	BL	---	---	Comply	
		Hg	BL	---	---	Comply	
		Cr(VI)▼	BL	---	---	Comply	
		PBBs	BL	---	---	Comply	
		PBDEs	BL	---	---	Comply	
		DBP	---	BL	---	Comply	



Part No.	Part Description	Restricted Substances	Results of EDXRF <sup>(1)</sup>	Screening Result of PHTH <sup>(2)</sup>	Result of Wet Chemical Testing <sup>(3)</sup> (mg/kg)	Conclusion	Sample Submitted / Resubmitted Date
		BBP	---	BL	---	Comply	
		DEHP	---	BL	---	Comply	
		DIBP	---	BL	---	Comply	
4	Black surfaced metal screw	Pb	BL	---	---	Comply	15 Jun 2021
		Cd	BL	---	---	Comply	
		Hg	BL	---	---	Comply	
		Cr(VI)▼	IN	---	ND	Comply	
		PBBs	---	---	---	---	
		PBDEs	---	---	---	---	
		DBP	---	---	---	---	
		BBP	---	---	---	---	
		DEHP	---	---	---	---	
		DIBP	---	---	---	---	
5	Black rubber sheet	Pb	BL	---	---	Comply	15 Jun 2021
		Cd	BL	---	---	Comply	
		Hg	BL	---	---	Comply	
		Cr(VI)▼	BL	---	---	Comply	
		PBBs	BL	---	---	Comply	
		PBDEs	BL	---	---	Comply	
		DBP	---	BL	---	Comply	
		BBP	---	BL	---	Comply	
		DEHP	---	BL	---	Comply	
		DIBP	---	BL	---	Comply	





Part No.	Part Description	Restricted Substances	Results of EDXRF <sup>(1)</sup>	Screening Result of PHTH <sup>(2)</sup>	Result of Wet Chemical Testing <sup>(3)</sup> (mg/kg)	Conclusion	Sample Submitted / Resubmitted Date
6	Silvery metal sheet	Pb	BL	---	---	Comply	15 Jun 2021
		Cd	BL	---	---	Comply	
		Hg	BL	---	---	Comply	
		Cr(VI)▼	BL	---	---	Comply	
		PBBs	---	---	---	---	
		PBDEs	---	---	---	---	
		DBP	---	---	---	---	
		BBP	---	---	---	---	
		DEHP	---	---	---	---	
		DIBP	---	---	---	---	
7	White glue	Pb	BL	---	---	Comply	15 Jun 2021
		Cd	BL	---	---	Comply	
		Hg	BL	---	---	Comply	
		Cr(VI)▼	BL	---	---	Comply	
		PBBs	BL	---	---	Comply	
		PBDEs	BL	---	---	Comply	
		DBP	---	BL	---	Comply	
		BBP	---	BL	---	Comply	
		DEHP	---	BL	---	Comply	
		DIBP	---	BL	---	Comply	
8	Black surfaced metal screw	Pb	BL	---	---	Comply	15 Jun 2021
		Cd	BL	---	---	Comply	
		Hg	BL	---	---	Comply	
		Cr(VI)▼	IN	---	ND	Comply	
		PBBs	---	---	---	---	
		PBDEs	---	---	---	---	
		DBP	---	---	---	---	



Part No.	Part Description	Restricted Substances	Results of EDXRF <sup>(1)</sup>	Screening Result of PHTH <sup>(2)</sup>	Result of Wet Chemical Testing <sup>(3)</sup> (mg/kg)	Conclusion	Sample Submitted / Resubmitted Date
		BBP DEHP DIBP	--- --- ---	--- --- ---	--- --- ---	--- --- ---	
9	White glue	Pb Cd Hg Cr(VI)▼ PBBs PBDEs DBP BBP DEHP DIBP	BL BL BL BL BL BL --- --- --- ---	--- --- --- --- --- --- BL BL BL BL	--- --- --- --- --- --- --- --- --- ---	Comply Comply Comply Comply Comply Comply Comply Comply Comply Comply	15 Jun 2021
10	Multicolor surfaced metal frame	Pb Cd Hg Cr(VI)▼ PBBs PBDEs DBP BBP DEHP DIBP	BL BL BL IN --- --- --- --- --- ---	--- --- --- --- --- --- --- --- --- ---	--- --- --- ND --- --- --- --- --- ---	Comply Comply Comply Comply --- --- --- --- --- ---	15 Jun 2021



Part No.	Part Description	Restricted Substances	Results of EDXRF <sup>(1)</sup>	Screening Result of PHTH <sup>(2)</sup>	Result of Wet Chemical Testing <sup>(3)</sup> (mg/kg)	Conclusion	Sample Submitted / Resubmitted Date
11	Beige glue	Pb	BL	---	---	Comply	15 Jun 2021
		Cd	BL	---	---	Comply	
		Hg	BL	---	---	Comply	
		Cr(VI)▼	BL	---	---	Comply	
		PBBs	BL	---	---	Comply	
		PBDEs	BL	---	---	Comply	
		DBP	---	BL	---	Comply	
		BBP	---	BL	---	Comply	
		DEHP	---	BL	---	Comply	
DIBP	---	BL	---	Comply			
12	White adhesive plastic sheet w/black printing	Pb	BL	---	---	Comply	15 Jun 2021
		Cd	BL	---	---	Comply	
		Hg	BL	---	---	Comply	
		Cr(VI)▼	BL	---	---	Comply	
		PBBs	BL	---	---	Comply	
		PBDEs	BL	---	---	Comply	
		DBP	---	---	ND	Comply	
		BBP	---	---	ND	Comply	
		DEHP	---	---	ND	Comply	
DIBP	---	---	ND	Comply			
13	Black glue	Pb	BL	---	---	Comply	15 Jun 2021
		Cd	BL	---	---	Comply	
		Hg	BL	---	---	Comply	
		Cr(VI)▼	BL	---	---	Comply	
		PBBs	BL	---	---	Comply	
		PBDEs	BL	---	---	Comply	
		DBP	---	BL	---	Comply	



Unless otherwise agreed in writing, this document is issued by the Company subject to its General Conditions of Service printed overleaf, available on request or accessible at <http://www.sgs.com/en/Terms-and-Conditions.aspx> and, for electronic format documents, subject to Terms and Conditions for Electronic Documents at <http://www.sgs.com/en/Terms-and-Conditions/Terms-e-Documents.aspx>. Attention is drawn to the limitation of liability, indemnification and jurisdiction issues defined therein. Any holder of this document is advised that information contained hereon reflects the Company's findings at the time of its intervention only and within the limits of Client's instructions, if any. The Company's sole responsibility is to its Client and this document does not exonerate parties to a transaction from exercising all their rights and obligations under the transaction documents. This document cannot be reproduced except in full, without prior written approval of the Company. Any unauthorized alteration, forgery or falsification of the content or appearance of this document is unlawful and offenders may be prosecuted to the fullest extent of the law. Unless otherwise stated the results shown in this test report refer only to the sample(s) tested.

Attention: To check the authenticity of testing / inspection report & certificate, please contact us at telephone: (86-755) 8307 1443, or email: [CN.Doccheck@sgs.com](mailto:CN.Doccheck@sgs.com)

Part No.	Part Description	Restricted Substances	Results of EDXRF <sup>(1)</sup>	Screening Result of PHTH <sup>(2)</sup>	Result of Wet Chemical Testing <sup>(3)</sup> (mg/kg)	Conclusion	Sample Submitted / Resubmitted Date
		BBP	---	BL	---	Comply	
		DEHP	---	BL	---	Comply	
		DIBP	---	BL	---	Comply	
14	Black plastic sheet	Pb	BL	---	---	Comply	15 Jun 2021
		Cd	BL	---	---	Comply	
		Hg	BL	---	---	Comply	
		Cr(VI)▼	BL	---	---	Comply	
		PBBs	BL	---	---	Comply	
		PBDEs	BL	---	---	Comply	
		DBP	---	BL	---	Comply	
		BBP	---	BL	---	Comply	
		DEHP	---	BL	---	Comply	
		DIBP	---	BL	---	Comply	
15	Black plastic sheet	Pb	BL	---	---	Comply	15 Jun 2021
		Cd	BL	---	---	Comply	
		Hg	BL	---	---	Comply	
		Cr(VI)▼	BL	---	---	Comply	
		PBBs	BL	---	---	Comply	
		PBDEs	BL	---	---	Comply	
		DBP	---	BL	---	Comply	
		BBP	---	BL	---	Comply	
		DEHP	---	BL	---	Comply	
		DIBP	---	BL	---	Comply	



Part No.	Part Description	Restricted Substances	Results of EDXRF <sup>(1)</sup>	Screening Result of PHTH <sup>(2)</sup>	Result of Wet Chemical Testing <sup>(3)</sup> (mg/kg)	Conclusion	Sample Submitted / Resubmitted Date
16	Brown glue	Pb	BL	---	---	Comply	15 Jun 2021
		Cd	BL	---	---	Comply	
		Hg	BL	---	---	Comply	
		Cr(VI)▼	BL	---	---	Comply	
		PBBs	BL	---	---	Comply	
		PBDEs	BL	---	---	Comply	
		DBP	---	---	ND	Comply	
		BBP	---	---	ND	Comply	
		DEHP	---	---	ND	Comply	
DIBP	---	---	ND	Comply			
17	Copper-colored enamel-insulated wire	Pb	BL	---	---	Comply	15 Jun 2021
		Cd	BL	---	---	Comply	
		Hg	BL	---	---	Comply	
		Cr(VI)▼	BL	---	---	Comply	
		PBBs	BL	---	---	Comply	
		PBDEs	BL	---	---	Comply	
		DBP	---	BL	---	Comply	
		BBP	---	BL	---	Comply	
		DEHP	---	BL	---	Comply	
DIBP	---	BL	---	Comply			
18	Brown plastic sheet	Pb	BL	---	---	Comply	15 Jun 2021
		Cd	BL	---	---	Comply	
		Hg	BL	---	---	Comply	
		Cr(VI)▼	BL	---	---	Comply	
		PBBs	BL	---	---	Comply	
		PBDEs	BL	---	---	Comply	
		DBP	---	BL	---	Comply	



Unless otherwise agreed in writing, this document is issued by the Company subject to its General Conditions of Service printed overleaf, available on request or accessible at <http://www.sgs.com/en/Terms-and-Conditions.aspx> and, for electronic format documents, subject to Terms and Conditions for Electronic Documents at <http://www.sgs.com/en/Terms-and-Conditions/Terms-e-Documents.aspx>. Attention is drawn to the limitation of liability, indemnification and jurisdiction issues defined therein. Any holder of this document is advised that information contained hereon reflects the Company's findings at the time of its intervention only and within the limits of Client's instructions, if any. The Company's sole responsibility is to its Client and this document does not exonerate parties to a transaction from exercising all their rights and obligations under the transaction documents. This document cannot be reproduced except in full, without prior written approval of the Company. Any unauthorized alteration, forgery or falsification of the content or appearance of this document is unlawful and offenders may be prosecuted to the fullest extent of the law. Unless otherwise stated the results shown in this test report refer only to the sample(s) tested.

Attention: To check the authenticity of testing / inspection report & certificate, please contact us at telephone: (86-755) 8307 1443, or email: [CN.Doccheck@sgs.com](mailto:CN.Doccheck@sgs.com)



Part No.	Part Description	Restricted Substances	Results of EDXRF <sup>(1)</sup>	Screening Result of PHTH <sup>(2)</sup>	Result of Wet Chemical Testing <sup>(3)</sup> (mg/kg)	Conclusion	Sample Submitted / Resubmitted Date
		BBP	---	BL	---	Comply	
		DEHP	---	BL	---	Comply	
		DIBP	---	BL	---	Comply	
19	Black plastic ring	Pb	BL	---	---	Comply	15 Jun 2021
		Cd	BL	---	---	Comply	
		Hg	BL	---	---	Comply	
		Cr(VI)▼	BL	---	---	Comply	
		PBBs	BL	---	---	Comply	
		PBDEs	BL	---	---	Comply	
		DBP	---	BL	---	Comply	
		BBP	---	BL	---	Comply	
		DEHP	---	BL	---	Comply	
		DIBP	---	BL	---	Comply	
20	Silvery metal solder	Pb	BL	---	---	Comply	15 Jun 2021
		Cd	BL	---	---	Comply	
		Hg	BL	---	---	Comply	
		Cr(VI)▼	BL	---	---	Comply	
		PBBs	---	---	---	---	
		PBDEs	---	---	---	---	
		DBP	---	---	---	---	
		BBP	---	---	---	---	
		DEHP	---	---	---	---	
		DIBP	---	---	---	---	



Part No.	Part Description	Restricted Substances	Results of EDXRF <sup>(1)</sup>	Screening Result of PHTH <sup>(2)</sup>	Result of Wet Chemical Testing <sup>(3)</sup> (mg/kg)	Conclusion	Sample Submitted / Resubmitted Date
21	Silvery metal terminal	Pb	BL	---	---	Comply	15 Jun 2021
		Cd	BL	---	---	Comply	
		Hg	BL	---	---	Comply	
		Cr(VI)▼	BL	---	---	Comply	
		PBBs	---	---	---	---	
		PBDEs	---	---	---	---	
		DBP	---	---	---	---	
		BBP	---	---	---	---	
		DEHP	---	---	---	---	
		DIBP	---	---	---	---	
22	Silvery metal terminal	Pb	BL	---	---	Comply	15 Jun 2021
		Cd	BL	---	---	Comply	
		Hg	BL	---	---	Comply	
		Cr(VI)▼	BL	---	---	Comply	
		PBBs	---	---	---	---	
		PBDEs	---	---	---	---	
		DBP	---	---	---	---	
		BBP	---	---	---	---	
		DEHP	---	---	---	---	
		DIBP	---	---	---	---	
23	Silvery metal sheet	Pb	BL	---	---	Comply	15 Jun 2021
		Cd	BL	---	---	Comply	
		Hg	BL	---	---	Comply	
		Cr(VI)▼	IN	---	ND	Comply	
		PBBs	---	---	---	---	
		PBDEs	---	---	---	---	
		DBP	---	---	---	---	



Unless otherwise agreed in writing, this document is issued by the Company subject to its General Conditions of Service printed overleaf, available on request or accessible at <http://www.sgs.com/en/Terms-and-Conditions.aspx> and, for electronic format documents, subject to Terms and Conditions for Electronic Documents at <http://www.sgs.com/en/Terms-and-Conditions/Terms-e-Documents.aspx>. Attention is drawn to the limitation of liability, indemnification and jurisdiction issues defined therein. Any holder of this document is advised that information contained hereon reflects the Company's findings at the time of its intervention only and within the limits of Client's instructions, if any. The Company's sole responsibility is to its Client and this document does not exonerate parties to a transaction from exercising all their rights and obligations under the transaction documents. This document cannot be reproduced except in full, without prior written approval of the Company. Any unauthorized alteration, forgery or falsification of the content or appearance of this document is unlawful and offenders may be prosecuted to the fullest extent of the law. Unless otherwise stated the results shown in this test report refer only to the sample(s) tested.

Attention: To check the authenticity of testing / inspection report & certificate, please contact us at telephone: (86-755) 8307 1443, or email: [CN.Doccheck@sgs.com](mailto:CN.Doccheck@sgs.com)

Part No.	Part Description	Restricted Substances	Results of EDXRF <sup>(1)</sup>	Screening Result of PHTH <sup>(2)</sup>	Result of Wet Chemical Testing <sup>(3)</sup> (mg/kg)	Conclusion	Sample Submitted / Resubmitted Date
		BBP DEHP DIBP	--- --- ---	--- --- ---	--- --- ---	--- --- ---	
24	Silvery metal sheet	Pb Cd Hg Cr(VI)▼ PBBs PBDEs DBP BBP DEHP DIBP	BL BL BL IN --- --- --- --- --- ---	--- --- --- --- --- --- --- --- --- ---	--- --- --- ND --- --- --- --- --- ---	Comply Comply Comply Comply --- --- --- --- --- ---	15 Jun 2021
25	Silvery metal shell	Pb Cd Hg Cr(VI)▼ PBBs PBDEs DBP BBP DEHP DIBP	BL BL BL IN --- --- --- --- --- ---	--- --- --- --- --- --- --- --- --- ---	--- --- --- ND --- --- --- --- --- ---	Comply Comply Comply Comply --- --- --- --- --- ---	15 Jun 2021



Part No.	Part Description	Restricted Substances	Results of EDXRF <sup>(1)</sup>	Screening Result of PHTH <sup>(2)</sup>	Result of Wet Chemical Testing <sup>(3)</sup> (mg/kg)	Conclusion	Sample Submitted / Resubmitted Date
26	Silvery magnet	Pb	BL	---	---	Comply	15 Jun 2021
		Cd	BL	---	---	Comply	
		Hg	BL	---	---	Comply	
		Cr(VI)▼	BL	---	---	Comply	
		PBBs	BL	---	---	Comply	
		PBDEs	BL	---	---	Comply	
		DBP	---	BL	---	Comply	
		BBP	---	BL	---	Comply	
		DEHP	---	BL	---	Comply	
DIBP	---	BL	---	Comply			
27	Green "PCB"	Pb	BL	---	---	Comply	15 Jun 2021
		Cd	BL	---	---	Comply	
		Hg	BL	---	---	Comply	
		Cr(VI)▼	BL	---	---	Comply	
		PBBs	IN	---	ND	Comply	
		PBDEs	IN	---	ND	Comply	
		DBP	---	---	ND	Comply	
		BBP	---	---	ND	Comply	
		DEHP	---	---	ND	Comply	
DIBP	---	---	ND	Comply			
28	Black adhesive foam sheet	Pb	BL	---	---	Comply	15 Jun 2021
		Cd	BL	---	---	Comply	
		Hg	BL	---	---	Comply	
		Cr(VI)▼	BL	---	---	Comply	
		PBBs	BL	---	---	Comply	
		PBDEs	BL	---	---	Comply	
		DBP	---	BL	---	Comply	



Part No.	Part Description	Restricted Substances	Results of EDXRF <sup>(1)</sup>	Screening Result of PHTH <sup>(2)</sup>	Result of Wet Chemical Testing <sup>(3)</sup> (mg/kg)	Conclusion	Sample Submitted / Resubmitted Date
		BBP	---	BL	---	Comply	
		DEHP	---	BL	---	Comply	
		DIBP	---	BL	---	Comply	
29	Black plastic (wire insulation)	Pb	BL	---	---	Comply	15 Jun 2021
		Cd	BL	---	---	Comply	13 Jul 2021
		Hg	BL	---	---	Comply	
		Cr(VI)▼	BL	---	---	Comply	
		PBBs	BL	---	---	Comply	
		PBDEs	BL	---	---	Comply	
		DBP	---	---	ND	Comply	
		BBP	---	---	ND	Comply	
		DEHP	---	---	ND	Comply	
		DIBP	---	---	ND	Comply	
30	Red plastic (wire insulation)	Pb	BL	---	---	Comply	15 Jun 2021
		Cd	BL	---	---	Comply	
		Hg	BL	---	---	Comply	
		Cr(VI)▼	BL	---	---	Comply	
		PBBs	BL	---	---	Comply	
		PBDEs	BL	---	---	Comply	
		DBP	---	---	ND	Comply	
		BBP	---	---	ND	Comply	
		DEHP	---	---	ND	Comply	
		DIBP	---	---	ND	Comply	





Part No.	Part Description	Restricted Substances	Results of EDXRF <sup>(1)</sup>	Screening Result of PHTH <sup>(2)</sup>	Result of Wet Chemical Testing <sup>(3)</sup> (mg/kg)	Conclusion	Sample Submitted / Resubmitted Date
31	Silvery metal terminal	Pb	BL	---	---	Comply	15 Jun 2021
		Cd	BL	---	---	Comply	
		Hg	BL	---	---	Comply	
		Cr(VI)▼	BL	---	---	Comply	
		PBBs	---	---	---	---	
		PBDEs	---	---	---	---	
		DBP	---	---	---	---	
		BBP	---	---	---	---	
		DEHP	---	---	---	---	
32	White plastic socket	Pb	BL	---	---	Comply	15 Jun 2021
		Cd	BL	---	---	Comply	
		Hg	BL	---	---	Comply	
		Cr(VI)▼	BL	---	---	Comply	
		PBBs	BL	---	---	Comply	
		PBDEs	BL	---	---	Comply	
		DBP	---	BL	---	Comply	
		BBP	---	BL	---	Comply	
		DEHP	---	BL	---	Comply	
33	White plastic housing	Pb	BL	---	---	Comply	15 Jun 2021
		Cd	BL	---	---	Comply	
		Hg	BL	---	---	Comply	
		Cr(VI)▼	BL	---	---	Comply	
		PBBs	BL	---	---	Comply	
		PBDEs	BL	---	---	Comply	
		DBP	---	BL	---	Comply	



Unless otherwise agreed in writing, this document is issued by the Company subject to its General Conditions of Service printed overleaf, available on request or accessible at <http://www.sgs.com/en/Terms-and-Conditions.aspx> and, for electronic format documents, subject to Terms and Conditions for Electronic Documents at <http://www.sgs.com/en/Terms-and-Conditions/Terms-e-Documents.aspx>. Attention is drawn to the limitation of liability, indemnification and jurisdiction issues defined therein. Any holder of this document is advised that information contained hereon reflects the Company's findings at the time of its intervention only and within the limits of Client's instructions, if any. The Company's sole responsibility is to its Client and this document does not exonerate parties to a transaction from exercising all their rights and obligations under the transaction documents. This document cannot be reproduced except in full, without prior written approval of the Company. Any unauthorized alteration, forgery or falsification of the content or appearance of this document is unlawful and offenders may be prosecuted to the fullest extent of the law. Unless otherwise stated the results shown in this test report refer only to the sample(s) tested.

Attention: To check the authenticity of testing / inspection report & certificate, please contact us at telephone: (86-755) 8307 1443, or email: [CN.Doccheck@sgs.com](mailto:CN.Doccheck@sgs.com)

Part No.	Part Description	Restricted Substances	Results of EDXRF <sup>(1)</sup>	Screening Result of PHTH <sup>(2)</sup>	Result of Wet Chemical Testing <sup>(3)</sup> (mg/kg)	Conclusion	Sample Submitted / Resubmitted Date
		BBP	---	BL	---	Comply	
		DEHP	---	BL	---	Comply	
		DIBP	---	BL	---	Comply	
34	Silvery metal solder	Pb	BL	---	---	Comply	15 Jun 2021
		Cd	BL	---	---	Comply	
		Hg	BL	---	---	Comply	
		Cr(VI)▼	BL	---	---	Comply	
		PBBs	---	---	---	---	
		PBDEs	---	---	---	---	
		DBP	---	---	---	---	
		BBP	---	---	---	---	
		DEHP	---	---	---	---	
		DIBP	---	---	---	---	
35	Black body	Pb	BL	---	---	Comply	15 Jun 2021
		Cd	BL	---	---	Comply	
		Hg	BL	---	---	Comply	
		Cr(VI)▼	BL	---	---	Comply	
		PBBs	BL	---	---	Comply	
		PBDEs	BL	---	---	Comply	
		DBP	---	BL	---	Comply	
		BBP	---	BL	---	Comply	
		DEHP	---	BL	---	Comply	
		DIBP	---	BL	---	Comply	



Part No.	Part Description	Restricted Substances	Results of EDXRF <sup>(1)</sup>	Screening Result of PHTH <sup>(2)</sup>	Result of Wet Chemical Testing <sup>(3)</sup> (mg/kg)	Conclusion	Sample Submitted / Resubmitted Date
36	Green "PCB"	Pb	BL	---	---	Comply	15 Jun 2021
		Cd	BL	---	---	Comply	
		Hg	BL	---	---	Comply	
		Cr(VI)▼	BL	---	---	Comply	
		PBBs	IN	---	ND	Comply	
		PBDEs	IN	---	ND	Comply	
		DBP	---	---	ND	Comply	
		BBP	---	---	ND	Comply	
		DEHP	---	---	ND	Comply	
		DIBP	---	---	ND	Comply	
37	White plastic housing	Pb	BL	---	---	Comply	15 Jun 2021
		Cd	BL	---	---	Comply	
		Hg	BL	---	---	Comply	
		Cr(VI)▼	BL	---	---	Comply	
		PBBs	BL	---	---	Comply	
		PBDEs	BL	---	---	Comply	
		DBP	---	BL	---	Comply	
		BBP	---	BL	---	Comply	
		DEHP	---	BL	---	Comply	
		DIBP	---	BL	---	Comply	
38	Black glue	Pb	BL	---	---	Comply	15 Jun 2021
		Cd	BL	---	---	Comply	
		Hg	BL	---	---	Comply	
		Cr(VI)▼	BL	---	---	Comply	
		PBBs	BL	---	---	Comply	
		PBDEs	BL	---	---	Comply	
		DBP	---	BL	---	Comply	



Part No.	Part Description	Restricted Substances	Results of EDXRF <sup>(1)</sup>	Screening Result of PHTH <sup>(2)</sup>	Result of Wet Chemical Testing <sup>(3)</sup> (mg/kg)	Conclusion	Sample Submitted / Resubmitted Date
		BBP	---	BL	---	Comply	
		DEHP	---	BL	---	Comply	
		DIBP	---	BL	---	Comply	
39	Translucent body (LED)	Pb	BL	---	---	Comply	15 Jun 2021
		Cd	BL	---	---	Comply	
		Hg	BL	---	---	Comply	
		Cr(VI)▼	BL	---	---	Comply	
		PBBs	IN	---	ND	Comply	
		PBDEs	IN	---	ND	Comply	
		DBP	---	---	ND	Comply	
		BBP	---	---	ND	Comply	
		DEHP	---	---	ND	Comply	
		DIBP	---	---	ND	Comply	
40	Grey body	Pb	BL	---	---	Comply	15 Jun 2021
		Cd	BL	---	---	Comply	
		Hg	BL	---	---	Comply	
		Cr(VI)▼	IN	---	ND	Comply	
		PBBs	BL	---	---	Comply	
		PBDEs	BL	---	---	Comply	
		DBP	---	---	ND	Comply	
		BBP	---	---	ND	Comply	
		DEHP	---	---	ND	Comply	
		DIBP	---	---	ND	Comply	



Unless otherwise agreed in writing, this document is issued by the Company subject to its General Conditions of Service printed overleaf, available on request or accessible at <http://www.sgs.com/en/Terms-and-Conditions.aspx> and, for electronic format documents, subject to Terms and Conditions for Electronic Documents at <http://www.sgs.com/en/Terms-and-Conditions/Terms-e-Documents.aspx>. Attention is drawn to the limitation of liability, indemnification and jurisdiction issues defined therein. Any holder of this document is advised that information contained hereon reflects the Company's findings at the time of its intervention only and within the limits of Client's instructions, if any. The Company's sole responsibility is to its Client and this document does not exonerate parties to a transaction from exercising all their rights and obligations under the transaction documents. This document cannot be reproduced except in full, without prior written approval of the Company. Any unauthorized alteration, forgery or falsification of the content or appearance of this document is unlawful and offenders may be prosecuted to the fullest extent of the law. Unless otherwise stated the results shown in this test report refer only to the sample(s) tested.

Attention: To check the authenticity of testing / inspection report & certificate, please contact us at telephone: (86-755) 8307 1443, or email: [CN.Doccheck@sgs.com](mailto:CN.Doccheck@sgs.com)

Part No.	Part Description	Restricted Substances	Results of EDXRF <sup>(1)</sup>	Screening Result of PHTH <sup>(2)</sup>	Result of Wet Chemical Testing <sup>(3)</sup> (mg/kg)	Conclusion	Sample Submitted / Resubmitted Date
41	Black plastic part	Pb	BL	---	---	Comply	15 Jun 2021
		Cd	BL	---	---	Comply	
		Hg	BL	---	---	Comply	
		Cr(VI)▼	BL	---	---	Comply	
		PBBs	BL	---	---	Comply	
		PBDEs	BL	---	---	Comply	
		DBP	---	BL	---	Comply	
		BBP	---	BL	---	Comply	
		DEHP	---	BL	---	Comply	
DIBP	---	BL	---	Comply			
42	Silvery metal sheet	Pb	BL	---	---	Comply	15 Jun 2021
		Cd	BL	---	---	Comply	
		Hg	BL	---	---	Comply	
		Cr(VI)▼	BL	---	---	Comply	
		PBBs	---	---	---	---	
		PBDEs	---	---	---	---	
		DBP	---	---	---	---	
		BBP	---	---	---	---	
		DEHP	---	---	---	---	
DIBP	---	---	---	---			
43	Silvery metal sheet	Pb	BL	---	---	Comply	15 Jun 2021
		Cd	BL	---	---	Comply	
		Hg	BL	---	---	Comply	
		Cr(VI)▼	BL	---	---	Comply	05 Jul 2021 07 Jul 2021
		PBBs	---	---	---	---	
		PBDEs	---	---	---	---	
		DBP	---	---	---	---	





Part No.	Part Description	Restricted Substances	Results of EDXRF <sup>(1)</sup>	Screening Result of PHTH <sup>(2)</sup>	Result of Wet Chemical Testing <sup>(3)</sup> (mg/kg)	Conclusion	Sample Submitted / Resubmitted Date
		BBP DEHP DIBP	--- --- ---	--- --- ---	--- --- ---	--- --- ---	
44	Black plastic shell w/white printing	Pb Cd Hg Cr(VI)▼ PBBs PBDEs DBP BBP DEHP DIBP	BL BL BL BL BL BL --- --- --- ---	--- --- --- --- --- --- --- --- --- ---	--- --- --- --- --- --- ND ND ND ND	Comply Comply Comply Comply Comply Comply Comply Comply Comply Comply	15 Jun 2021
45	Black rubber cover	Pb Cd Hg Cr(VI)▼ PBBs PBDEs DBP BBP DEHP DIBP	BL BL BL BL BL BL --- --- --- ---	--- --- --- --- --- --- BL BL BL BL	--- --- --- --- --- --- --- --- --- ---	Comply Comply Comply Comply Comply Comply Comply Comply Comply Comply	15 Jun 2021



Part No.	Part Description	Restricted Substances	Results of EDXRF <sup>(1)</sup>	Screening Result of PHTH <sup>(2)</sup>	Result of Wet Chemical Testing <sup>(3)</sup> (mg/kg)	Conclusion	Sample Submitted / Resubmitted Date
46	Red enamel-insulated wire	Pb	BL	---	---	Comply	15 Jun 2021
		Cd	BL	---	---	Comply	
		Hg	BL	---	---	Comply	
		Cr(VI)▼	BL	---	---	Comply	
		PBBs	BL	---	---	Comply	
		PBDEs	BL	---	---	Comply	
		DBP	---	---	ND	Comply	
		BBP	---	---	ND	Comply	
		DEHP	---	---	ND	Comply	
DIBP	---	---	ND	Comply			
47	Copper-colored enamel-insulated wire	Pb	BL	---	---	Comply	15 Jun 2021
		Cd	BL	---	---	Comply	
		Hg	BL	---	---	Comply	
		Cr(VI)▼	BL	---	---	Comply	
		PBBs	BL	---	---	Comply	
		PBDEs	BL	---	---	Comply	
		DBP	---	---	ND	Comply	
		BBP	---	---	ND	Comply	
		DEHP	---	---	ND	Comply	
DIBP	---	---	ND	Comply			
48	Green surfaced core	Pb	BL	---	---	Comply	15 Jun 2021
		Cd	BL	---	---	Comply	
		Hg	BL	---	---	Comply	
		Cr(VI)▼	BL	---	---	Comply	
		PBBs	BL	---	---	Comply	
		PBDEs	BL	---	---	Comply	
		DBP	---	---	ND	Comply	



Unless otherwise agreed in writing, this document is issued by the Company subject to its General Conditions of Service printed overleaf, available on request or accessible at <http://www.sgs.com/en/Terms-and-Conditions.aspx> and, for electronic format documents, subject to Terms and Conditions for Electronic Documents at <http://www.sgs.com/en/Terms-and-Conditions/Terms-e-Documents.aspx>. Attention is drawn to the limitation of liability, indemnification and jurisdiction issues defined therein. Any holder of this document is advised that information contained hereon reflects the Company's findings at the time of its intervention only and within the limits of Client's instructions, if any. The Company's sole responsibility is to its Client and this document does not exonerate parties to a transaction from exercising all their rights and obligations under the transaction documents. This document cannot be reproduced except in full, without prior written approval of the Company. Any unauthorized alteration, forgery or falsification of the content or appearance of this document is unlawful and offenders may be prosecuted to the fullest extent of the law. Unless otherwise stated the results shown in this test report refer only to the sample(s) tested.

Attention: To check the authenticity of testing / inspection report & certificate, please contact us at telephone: (86-755) 8307 1443, or email: [CN.Doccheck@sgs.com](mailto:CN.Doccheck@sgs.com)

Part No.	Part Description	Restricted Substances	Results of EDXRF <sup>(1)</sup>	Screening Result of PHTH <sup>(2)</sup>	Result of Wet Chemical Testing <sup>(3)</sup> (mg/kg)	Conclusion	Sample Submitted / Resubmitted Date
		BBP	---	---	ND	Comply	
		DEHP	---	---	ND	Comply	
		DIBP	---	---	ND	Comply	
49	Black body	Pb	BL	---	---	Comply	15 Jun 2021
		Cd	BL	---	---	Comply	
		Hg	BL	---	---	Comply	
		Cr(VI)▼	BL	---	---	Comply	
		PBBs	BL	---	---	Comply	
		PBDEs	BL	---	---	Comply	
		DBP	---	---	ND	Comply	
		BBP	---	---	ND	Comply	
		DEHP	---	---	ND	Comply	
		DIBP	---	---	ND	Comply	
50	Black body	Pb	BL	---	---	Comply	15 Jun 2021
		Cd	BL	---	---	Comply	
		Hg	BL	---	---	Comply	
		Cr(VI)▼	BL	---	---	Comply	
		PBBs	BL	---	---	Comply	
		PBDEs	BL	---	---	Comply	
		DBP	---	---	ND	Comply	
		BBP	---	---	ND	Comply	
		DEHP	---	---	ND	Comply	
		DIBP	---	---	ND	Comply	



Part No.	Part Description	Restricted Substances	Results of EDXRF <sup>(1)</sup>	Screening Result of PHTH <sup>(2)</sup>	Result of Wet Chemical Testing <sup>(3)</sup> (mg/kg)	Conclusion	Sample Submitted / Resubmitted Date
51	Black body	Pb	OL▲	---	---	Comply	15 Jun 2021
		Cd	BL	---	---	Comply	
		Hg	BL	---	---	Comply	
		Cr(VI)▼	BL	---	---	Comply	
		PBBs	BL	---	---	Comply	
		PBDEs	BL	---	---	Comply	
		DBP	---	---	ND	Comply	
		BBP	---	---	ND	Comply	
		DEHP	---	---	ND	Comply	
DIBP	---	---	ND	Comply			
52	Silvery metal solder	Pb	BL	---	---	Comply	15 Jun 2021
		Cd	BL	---	---	Comply	
		Hg	BL	---	---	Comply	
		Cr(VI)▼	BL	---	---	Comply	
		PBBs	---	---	---	---	
		PBDEs	---	---	---	---	
		DBP	---	---	---	---	
		BBP	---	---	---	---	
		DEHP	---	---	---	---	
DIBP	---	---	---	---			
53	White adhesive plastic sheet w/black printing	Pb	BL	---	---	Comply	15 Jun 2021
		Cd	BL	---	---	Comply	
		Hg	BL	---	---	Comply	
		Cr(VI)▼	BL	---	---	Comply	
		PBBs	BL	---	---	Comply	
		PBDEs	BL	---	---	Comply	
		DBP	---	---	ND	Comply	



Part No.	Part Description	Restricted Substances	Results of EDXRF <sup>(1)</sup>	Screening Result of PHTH <sup>(2)</sup>	Result of Wet Chemical Testing <sup>(3)</sup> (mg/kg)	Conclusion	Sample Submitted / Resubmitted Date
		BBP	---	---	ND	Comply	
		DEHP	---	---	ND	Comply	
		DIBP	---	---	ND	Comply	
54	Beige plastic housing	Pb	BL	---	---	Comply	15 Jun 2021
		Cd	BL	---	---	Comply	
		Hg	BL	---	---	Comply	
		Cr(VI)▼	BL	---	---	Comply	
		PBBs	IN	---	ND	Comply	
		PBDEs	IN	---	ND	Comply	
		DBP	---	---	ND	Comply	
		BBP	---	---	ND	Comply	
		DEHP	---	---	ND	Comply	
		DIBP	---	---	ND	Comply	
55	Black body	Pb	BL	---	---	Comply	15 Jun 2021
		Cd	BL	---	---	Comply	
		Hg	BL	---	---	Comply	
		Cr(VI)▼	BL	---	---	Comply	
		PBBs	BL	---	---	Comply	
		PBDEs	BL	---	---	Comply	
		DBP	---	---	ND	Comply	
		BBP	---	---	ND	Comply	
		DEHP	---	---	ND	Comply	
		DIBP	---	---	ND	Comply	





Part No.	Part Description	Restricted Substances	Results of EDXRF <sup>(1)</sup>	Screening Result of PHTH <sup>(2)</sup>	Result of Wet Chemical Testing <sup>(3)</sup> (mg/kg)	Conclusion	Sample Submitted / Resubmitted Date
56	Silvery metal pin	Pb	BL	---	---	Comply	15 Jun 2021
		Cd	BL	---	---	Comply	
		Hg	BL	---	---	Comply	
		Cr(VI)▼	BL	---	---	Comply	
		PBBs	---	---	---	---	
		PBDEs	---	---	---	---	
		DBP	---	---	---	---	
		BBP	---	---	---	---	
		DEHP	---	---	---	---	
		DIBP	---	---	---	---	
57	Silvery metal pin	Pb	BL	---	---	Comply	15 Jun 2021
		Cd	BL	---	---	Comply	
		Hg	BL	---	---	Comply	
		Cr(VI)▼	BL	---	---	Comply	
		PBBs	---	---	---	---	
		PBDEs	---	---	---	---	
		DBP	---	---	---	---	
		BBP	---	---	---	---	
		DEHP	---	---	---	---	
		DIBP	---	---	---	---	
58	Silvery metal part	Pb	BL	---	---	Comply	15 Jun 2021
		Cd	BL	---	---	Comply	
		Hg	BL	---	---	Comply	
		Cr(VI)▼	BL	---	---	Comply	
		PBBs	---	---	---	---	
		PBDEs	---	---	---	---	
		DBP	---	---	---	---	



Part No.	Part Description	Restricted Substances	Results of EDXRF <sup>(1)</sup>	Screening Result of PHTH <sup>(2)</sup>	Result of Wet Chemical Testing <sup>(3)</sup> (mg/kg)	Conclusion	Sample Submitted / Resubmitted Date
		BBP DEHP DIBP	--- --- ---	--- --- ---	--- --- ---	--- --- ---	
59	Silvery metal part	Pb Cd Hg Cr(VI)▼ PBBs PBDEs DBP BBP DEHP DIBP	BL BL BL BL --- --- --- --- --- ---	--- --- --- --- --- --- --- --- --- ---	--- --- --- --- --- --- --- --- --- ---	Comply Comply Comply Comply --- --- --- --- --- ---	15 Jun 2021
60	Beige glue	Pb Cd Hg Cr(VI)▼ PBBs PBDEs DBP BBP DEHP DIBP	BL BL BL BL BL BL --- --- --- ---	--- --- --- --- --- --- --- --- --- ---	--- --- --- --- --- --- ND ND ND ND	Comply Comply Comply Comply Comply Comply Comply Comply Comply Comply	15 Jun 2021



Part No.	Part Description	Restricted Substances	Results of EDXRF <sup>(1)</sup>	Screening Result of PHTH <sup>(2)</sup>	Result of Wet Chemical Testing <sup>(3)</sup> (mg/kg)	Conclusion	Sample Submitted / Resubmitted Date
61	Black adhesive sponge sheet	Pb	BL	---	---	Comply	15 Jun 2021
		Cd	BL	---	---	Comply	
		Hg	BL	---	---	Comply	
		Cr(VI)▼	BL	---	---	Comply	
		PBBs	BL	---	---	Comply	
		PBDEs	BL	---	---	Comply	
		DBP	---	---	121	Comply	
		BBP	---	---	ND	Comply	
		DEHP	---	---	ND	Comply	
DIBP	---	---	ND	Comply			
62	Black adhesive foam sheet	Pb	BL	---	---	Comply	15 Jun 2021
		Cd	BL	---	---	Comply	
		Hg	BL	---	---	Comply	
		Cr(VI)▼	BL	---	---	Comply	
		PBBs	BL	---	---	Comply	
		PBDEs	BL	---	---	Comply	
		DBP	---	---	ND	Comply	
		BBP	---	---	ND	Comply	
		DEHP	---	---	ND	Comply	
DIBP	---	---	ND	Comply			
63	Black plastic part	Pb	BL	---	---	Comply	15 Jun 2021
		Cd	BL	---	---	Comply	
		Hg	BL	---	---	Comply	
		Cr(VI)▼	BL	---	---	Comply	
		PBBs	BL	---	---	Comply	
		PBDEs	BL	---	---	Comply	
		DBP	---	---	ND	Comply	



Part No.	Part Description	Restricted Substances	Results of EDXRF <sup>(1)</sup>	Screening Result of PHTH <sup>(2)</sup>	Result of Wet Chemical Testing <sup>(3)</sup> (mg/kg)	Conclusion	Sample Submitted / Resubmitted Date
		BBP	---	---	ND	Comply	
		DEHP	---	---	ND	Comply	
		DIBP	---	---	ND	Comply	
64	Silvery metal part	Pb	BL	---	---	Comply	15 Jun 2021
		Cd	BL	---	---	Comply	
		Hg	BL	---	---	Comply	
		Cr(VI)▼	IN	---	ND	Comply	
		PBBs	---	---	---	---	
		PBDEs	---	---	---	---	
		DBP	---	---	---	---	
		BBP	---	---	---	---	
		DEHP	---	---	---	---	
		DIBP	---	---	---	---	
65	Black plastic part	Pb	BL	---	---	Comply	15 Jun 2021
		Cd	BL	---	---	Comply	
		Hg	BL	---	---	Comply	
		Cr(VI)▼	BL	---	---	Comply	
		PBBs	BL	---	---	Comply	
		PBDEs	BL	---	---	Comply	
		DBP	---	---	ND	Comply	
		BBP	---	---	ND	Comply	
		DEHP	---	---	ND	Comply	
		DIBP	---	---	ND	Comply	



Part No.	Part Description	Restricted Substances	Results of EDXRF <sup>(1)</sup>	Screening Result of PHTH <sup>(2)</sup>	Result of Wet Chemical Testing <sup>(3)</sup> (mg/kg)	Conclusion	Sample Submitted / Resubmitted Date
66	Golden metal pin	Pb	BL	---	---	Comply	15 Jun 2021
		Cd	BL	---	---	Comply	
		Hg	BL	---	---	Comply	
		Cr(VI)▼	BL	---	---	Comply	
		PBBs	---	---	---	---	
		PBDEs	---	---	---	---	
		DBP	---	---	---	---	
		BBP	---	---	---	---	
		DEHP	---	---	---	---	
		DIBP	---	---	---	---	
67	White plastic socket	Pb	BL	---	---	Comply	15 Jun 2021
		Cd	BL	---	---	Comply	
		Hg	BL	---	---	Comply	
		Cr(VI)▼	BL	---	---	Comply	
		PBBs	BL	---	---	Comply	
		PBDEs	BL	---	---	Comply	
		DBP	---	---	ND	Comply	
		BBP	---	---	ND	Comply	
		DEHP	---	---	ND	Comply	
		DIBP	---	---	ND	Comply	
68	White plastic socket	Pb	BL	---	---	Comply	15 Jun 2021
		Cd	BL	---	---	Comply	
		Hg	BL	---	---	Comply	
		Cr(VI)▼	BL	---	---	Comply	
		PBBs	BL	---	---	Comply	
		PBDEs	BL	---	---	Comply	
		DBP	---	---	ND	Comply	



Unless otherwise agreed in writing, this document is issued by the Company subject to its General Conditions of Service printed overleaf, available on request or accessible at <http://www.sgs.com/en/Terms-and-Conditions.aspx> and, for electronic format documents, subject to Terms and Conditions for Electronic Documents at <http://www.sgs.com/en/Terms-and-Conditions/Terms-e-Documents.aspx>. Attention is drawn to the limitation of liability, indemnification and jurisdiction issues defined therein. Any holder of this document is advised that information contained hereon reflects the Company's findings at the time of its intervention only and within the limits of Client's instructions, if any. The Company's sole responsibility is to its Client and this document does not exonerate parties to a transaction from exercising all their rights and obligations under the transaction documents. This document cannot be reproduced except in full, without prior written approval of the Company. Any unauthorized alteration, forgery or falsification of the content or appearance of this document is unlawful and offenders may be prosecuted to the fullest extent of the law. Unless otherwise stated the results shown in this test report refer only to the sample(s) tested.

Attention: To check the authenticity of testing / inspection report & certificate, please contact us at telephone: (86-755) 8307 1443, or email: [CN.Doccheck@sgs.com](mailto:CN.Doccheck@sgs.com)



Part No.	Part Description	Restricted Substances	Results of EDXRF <sup>(1)</sup>	Screening Result of PHTH <sup>(2)</sup>	Result of Wet Chemical Testing <sup>(3)</sup> (mg/kg)	Conclusion	Sample Submitted / Resubmitted Date
		BBP	---	---	ND	Comply	
		DEHP	---	---	ND	Comply	
		DIBP	---	---	ND	Comply	
69	Red plastic (wire insulation)	Pb	BL	---	---	Comply	15 Jun 2021
		Cd	BL	---	---	Comply	
		Hg	BL	---	---	Comply	
		Cr(VI)▼	BL	---	---	Comply	
		PBBs	BL	---	---	Comply	
		PBDEs	BL	---	---	Comply	
		DBP	---	---	142	Comply	
		BBP	---	---	ND	Comply	
		DEHP	---	---	ND	Comply	
		DIBP	---	---	ND	Comply	
70	Silvery metal terminal	Pb	BL	---	---	Comply	15 Jun 2021
		Cd	BL	---	---	Comply	
		Hg	BL	---	---	Comply	
		Cr(VI)▼	BL	---	---	Comply	
		PBBs	---	---	---	---	
		PBDEs	---	---	---	---	
		DBP	---	---	---	---	
		BBP	---	---	---	---	
		DEHP	---	---	---	---	
		DIBP	---	---	---	---	



Unless otherwise agreed in writing, this document is issued by the Company subject to its General Conditions of Service printed overleaf, available on request or accessible at <http://www.sgs.com/en/Terms-and-Conditions.aspx> and, for electronic format documents, subject to Terms and Conditions for Electronic Documents at <http://www.sgs.com/en/Terms-and-Conditions/Terms-e-Documents.aspx>. Attention is drawn to the limitation of liability, indemnification and jurisdiction issues defined therein. Any holder of this document is advised that information contained hereon reflects the Company's findings at the time of its intervention only and within the limits of Client's instructions, if any. The Company's sole responsibility is to its Client and this document does not exonerate parties to a transaction from exercising all their rights and obligations under the transaction documents. This document cannot be reproduced except in full, without prior written approval of the Company. Any unauthorized alteration, forgery or falsification of the content or appearance of this document is unlawful and offenders may be prosecuted to the fullest extent of the law. Unless otherwise stated the results shown in this test report refer only to the sample(s) tested.

Attention: To check the authenticity of testing / inspection report & certificate, please contact us at telephone: (86-755) 8307 1443, or email: [CN.Doccheck@sgs.com](mailto:CN.Doccheck@sgs.com)

Part No.	Part Description	Restricted Substances	Results of EDXRF <sup>(1)</sup>	Screening Result of PHTH <sup>(2)</sup>	Result of Wet Chemical Testing <sup>(3)</sup> (mg/kg)	Conclusion	Sample Submitted / Resubmitted Date
71	Black plastic (wire insulation)	Pb	BL	---	---	Comply	15 Jun 2021
		Cd	BL	---	---	Comply	
		Hg	BL	---	---	Comply	
		Cr(VI)▼	BL	---	---	Comply	
		PBBs	BL	---	---	Comply	
		PBDEs	BL	---	---	Comply	
		DBP	---	---	ND	Comply	
		BBP	---	---	ND	Comply	
		DEHP	---	---	ND	Comply	
DIBP	---	---	ND	Comply			
72	Green "PCB"	Pb	BL	---	---	Comply	15 Jun 2021
		Cd	BL	---	---	Comply	
		Hg	BL	---	---	Comply	
		Cr(VI)▼	BL	---	---	Comply	
		PBBs	IN	---	ND	Comply	
		PBDEs	IN	---	ND	Comply	
		DBP	---	---	ND	Comply	
		BBP	---	---	ND	Comply	
		DEHP	---	---	ND	Comply	
DIBP	---	---	ND	Comply			
73	Silvery metal solder	Pb	BL	---	---	Comply	15 Jun 2021
		Cd	BL	---	---	Comply	
		Hg	BL	---	---	Comply	
		Cr(VI)▼	BL	---	---	Comply	
		PBBs	---	---	---	---	
		PBDEs	---	---	---	---	
		DBP	---	---	---	---	



Part No.	Part Description	Restricted Substances	Results of EDXRF <sup>(1)</sup>	Screening Result of PHTH <sup>(2)</sup>	Result of Wet Chemical Testing <sup>(3)</sup> (mg/kg)	Conclusion	Sample Submitted / Resubmitted Date
		BBP DEHP DIBP	--- --- ---	--- --- ---	--- --- ---	--- --- ---	
74	Black rubber cover	Pb Cd Hg Cr(VI)▼ PBBs PBDEs DBP BBP DEHP DIBP	BL BL BL BL BL BL --- --- --- ---	--- --- --- --- --- --- BL BL BL BL	--- --- --- --- --- --- --- --- --- ---	Comply Comply Comply Comply Comply Comply Comply Comply Comply Comply	15 Jun 2021
75	Grey/white adhesive plastic sheet w/black printing	Pb Cd Hg Cr(VI)▼ PBBs PBDEs DBP BBP DEHP DIBP	BL BL BL BL BL BL --- --- --- ---	--- --- --- --- --- --- --- --- --- ---	--- --- --- --- --- --- ND ND ND ND	Comply Comply Comply Comply Comply Comply Comply Comply Comply Comply	15 Jun 2021



Part No.	Part Description	Restricted Substances	Results of EDXRF <sup>(1)</sup>	Screening Result of PHTH <sup>(2)</sup>	Result of Wet Chemical Testing <sup>(3)</sup> (mg/kg)	Conclusion	Sample Submitted / Resubmitted Date
76	Black plastic part	Pb	BL	---	---	Comply	15 Jun 2021
		Cd	BL	---	---	Comply	
		Hg	BL	---	---	Comply	
		Cr(VI)▼	BL	---	---	Comply	
		PBBs	BL	---	---	Comply	
		PBDEs	BL	---	---	Comply	
		DBP	---	---	ND	Comply	
		BBP	---	---	ND	Comply	
		DEHP	---	---	ND	Comply	
DIBP	---	---	ND	Comply			
77	Black plastic shell	Pb	BL	---	---	Comply	15 Jun 2021
		Cd	BL	---	---	Comply	
		Hg	BL	---	---	Comply	
		Cr(VI)▼	BL	---	---	Comply	
		PBBs	BL	---	---	Comply	
		PBDEs	BL	---	---	Comply	
		DBP	---	---	ND	Comply	
		BBP	---	---	ND	Comply	
		DEHP	---	---	ND	Comply	
DIBP	---	---	ND	Comply			
78	Orange plastic (cable jacket)	Pb	BL	---	---	Comply	15 Jun 2021
		Cd	BL	---	---	Comply	
		Hg	BL	---	---	Comply	
		Cr(VI)▼	BL	---	---	Comply	
		PBBs	BL	---	---	Comply	
		PBDEs	BL	---	---	Comply	
		DBP	---	---	ND	Comply	



Unless otherwise agreed in writing, this document is issued by the Company subject to its General Conditions of Service printed overleaf, available on request or accessible at <http://www.sgs.com/en/Terms-and-Conditions.aspx> and, for electronic format documents, subject to Terms and Conditions for Electronic Documents at <http://www.sgs.com/en/Terms-and-Conditions/Terms-e-Documents.aspx>. Attention is drawn to the limitation of liability, indemnification and jurisdiction issues defined therein. Any holder of this document is advised that information contained hereon reflects the Company's findings at the time of its intervention only and within the limits of Client's instructions, if any. The Company's sole responsibility is to its Client and this document does not exonerate parties to a transaction from exercising all their rights and obligations under the transaction documents. This document cannot be reproduced except in full, without prior written approval of the Company. Any unauthorized alteration, forgery or falsification of the content or appearance of this document is unlawful and offenders may be prosecuted to the fullest extent of the law. Unless otherwise stated the results shown in this test report refer only to the sample(s) tested.

Attention: To check the authenticity of testing / inspection report & certificate, please contact us at telephone: (86-755) 8307 1443, or email: [CN.Doccheck@sgs.com](mailto:CN.Doccheck@sgs.com)

Part No.	Part Description	Restricted Substances	Results of EDXRF <sup>(1)</sup>	Screening Result of PHTH <sup>(2)</sup>	Result of Wet Chemical Testing <sup>(3)</sup> (mg/kg)	Conclusion	Sample Submitted / Resubmitted Date
		BBP	---	---	ND	Comply	
		DEHP	---	---	ND	Comply	
		DIBP	---	---	ND	Comply	
79	White plastic (wire insulation)	Pb	BL	---	---	Comply	15 Jun 2021
		Cd	BL	---	---	Comply	
		Hg	BL	---	---	Comply	
		Cr(VI)▼	BL	---	---	Comply	
		PBBs	BL	---	---	Comply	
		PBDEs	BL	---	---	Comply	
		DBP	---	---	ND	Comply	
		BBP	---	---	ND	Comply	
		DEHP	---	---	ND	Comply	
		DIBP	---	---	ND	Comply	
80	Red plastic (wire insulation)	Pb	BL	---	---	Comply	15 Jun 2021
		Cd	BL	---	---	Comply	
		Hg	BL	---	---	Comply	
		Cr(VI)▼	BL	---	---	Comply	
		PBBs	BL	---	---	Comply	
		PBDEs	BL	---	---	Comply	
		DBP	---	BL	---	Comply	
		BBP	---	BL	---	Comply	
		DEHP	---	BL	---	Comply	
		DIBP	---	BL	---	Comply	





Part No.	Part Description	Restricted Substances	Results of EDXRF <sup>(1)</sup>	Screening Result of PHTH <sup>(2)</sup>	Result of Wet Chemical Testing <sup>(3)</sup> (mg/kg)	Conclusion	Sample Submitted / Resubmitted Date
81	Orange plastic shell	Pb	BL	---	---	Comply	15 Jun 2021
		Cd	BL	---	---	Comply	
		Hg	BL	---	---	Comply	
		Cr(VI)▼	BL	---	---	Comply	
		PBBs	BL	---	---	Comply	
		PBDEs	BL	---	---	Comply	
		DBP	---	---	ND	Comply	
		BBP	---	---	ND	Comply	
		DEHP	---	---	ND	Comply	
DIBP	---	---	ND	Comply			
82	Silvery metal part	Pb	BL	---	---	Comply	15 Jun 2021
		Cd	BL	---	---	Comply	
		Hg	BL	---	---	Comply	
		Cr(VI)▼	IN	---	ND	Comply	
		PBBs	---	---	---	---	
		PBDEs	---	---	---	---	
		DBP	---	---	---	---	
		BBP	---	---	---	---	
		DEHP	---	---	---	---	
DIBP	---	---	---	---			
83	Silvery metal pin	Pb	BL	---	---	Comply	15 Jun 2021
		Cd	BL	---	---	Comply	
		Hg	BL	---	---	Comply	
		Cr(VI)▼	IN	---	ND	Comply	
		PBBs	---	---	---	---	
		PBDEs	---	---	---	---	
		DBP	---	---	---	---	



Unless otherwise agreed in writing, this document is issued by the Company subject to its General Conditions of Service printed overleaf, available on request or accessible at <http://www.sgs.com/en/Terms-and-Conditions.aspx> and, for electronic format documents, subject to Terms and Conditions for Electronic Documents at <http://www.sgs.com/en/Terms-and-Conditions/Terms-e-Documents.aspx>. Attention is drawn to the limitation of liability, indemnification and jurisdiction issues defined therein. Any holder of this document is advised that information contained hereon reflects the Company's findings at the time of its intervention only and within the limits of Client's instructions, if any. The Company's sole responsibility is to its Client and this document does not exonerate parties to a transaction from exercising all their rights and obligations under the transaction documents. This document cannot be reproduced except in full, without prior written approval of the Company. Any unauthorized alteration, forgery or falsification of the content or appearance of this document is unlawful and offenders may be prosecuted to the fullest extent of the law. Unless otherwise stated the results shown in this test report refer only to the sample(s) tested.

Attention: To check the authenticity of testing / inspection report & certificate, please contact us at telephone: (86-755) 8307 1443, or email: [CN.Doccheck@sgs.com](mailto:CN.Doccheck@sgs.com)

Part No.	Part Description	Restricted Substances	Results of EDXRF <sup>(1)</sup>	Screening Result of PHTH <sup>(2)</sup>	Result of Wet Chemical Testing <sup>(3)</sup> (mg/kg)	Conclusion	Sample Submitted / Resubmitted Date
		BBP DEHP DIBP	--- --- ---	--- --- ---	--- --- ---	--- --- ---	
84	Orange plastic part	Pb Cd Hg Cr(VI)▼ PBBs PBDEs DBP BBP DEHP DIBP	BL BL BL BL BL BL --- --- --- ---	--- --- --- --- --- --- BL BL BL BL	--- --- --- --- --- --- --- --- --- ---	Comply Comply Comply Comply Comply Comply Comply Comply Comply Comply	15 Jun 2021
85	Translucent plastic part	Pb Cd Hg Cr(VI)▼ PBBs PBDEs DBP BBP DEHP DIBP	BL BL BL BL BL BL --- --- --- ---	--- --- --- --- --- --- BL BL BL BL	--- --- --- --- --- --- --- --- --- ---	Comply Comply Comply Comply Comply Comply Comply Comply Comply Comply	15 Jun 2021



Part No.	Part Description	Restricted Substances	Results of EDXRF <sup>(1)</sup>	Screening Result of PHTH <sup>(2)</sup>	Result of Wet Chemical Testing <sup>(3)</sup> (mg/kg)	Conclusion	Sample Submitted / Resubmitted Date
86	Silvery metal solder	Pb	BL	---	---	Comply	15 Jun 2021
		Cd	BL	---	---	Comply	
		Hg	BL	---	---	Comply	
		Cr(VI)▼	BL	---	---	Comply	
		PBBs	---	---	---	---	
		PBDEs	---	---	---	---	
		DBP	---	---	---	---	
		BBP	---	---	---	---	
		DEHP	---	---	---	---	
		DIBP	---	---	---	---	
87	Grey plastic part	Pb	BL	---	---	Comply	15 Jun 2021
		Cd	BL	---	---	Comply	
		Hg	BL	---	---	Comply	
		Cr(VI)▼	BL	---	---	Comply	
		PBBs	BL	---	---	Comply	
		PBDEs	BL	---	---	Comply	
		DBP	---	BL	---	Comply	
		BBP	---	BL	---	Comply	
		DEHP	---	BL	---	Comply	
		DIBP	---	BL	---	Comply	
88	Silvery metal pin	Pb	BL	---	---	Comply	15 Jun 2021
		Cd	BL	---	---	Comply	
		Hg	BL	---	---	Comply	
		Cr(VI)▼	BL	---	---	Comply	
		PBBs	---	---	---	---	
		PBDEs	---	---	---	---	
		DBP	---	---	---	---	



Part No.	Part Description	Restricted Substances	Results of EDXRF <sup>(1)</sup>	Screening Result of PHTH <sup>(2)</sup>	Result of Wet Chemical Testing <sup>(3)</sup> (mg/kg)	Conclusion	Sample Submitted / Resubmitted Date
		BBP DEHP DIBP	--- --- ---	--- --- ---	--- --- ---	--- --- ---	
89	Orange plastic shell	Pb Cd Hg Cr(VI)▼ PBBs PBDEs DBP BBP DEHP DIBP	BL BL BL BL BL BL --- --- --- ---	--- --- --- --- --- --- BL BL BL BL	--- --- --- --- --- --- --- --- --- ---	Comply Comply Comply Comply Comply Comply Comply Comply Comply Comply	15 Jun 2021
90	Silvery metal part	Pb Cd Hg Cr(VI)▼ PBBs PBDEs DBP BBP DEHP DIBP	BL BL BL BL --- --- --- --- --- ---	--- --- --- --- --- --- --- --- --- ---	--- --- --- --- --- --- --- --- --- ---	Comply Comply Comply Comply --- --- --- --- --- ---	15 Jun 2021



Part No.	Part Description	Restricted Substances	Results of EDXRF <sup>(1)</sup>	Screening Result of PHTH <sup>(2)</sup>	Result of Wet Chemical Testing <sup>(3)</sup> (mg/kg)	Conclusion	Sample Submitted / Resubmitted Date
91	Translucent plastic part	Pb	BL	---	---	Comply	15 Jun 2021
		Cd	BL	---	---	Comply	
		Hg	BL	---	---	Comply	
		Cr(VI)▼	BL	---	---	Comply	
		PBBs	BL	---	---	Comply	
		PBDEs	BL	---	---	Comply	
		DBP	---	BL	---	Comply	
		BBP	---	BL	---	Comply	
		DEHP	---	BL	---	Comply	
DIBP	---	BL	---	Comply			
92	Silvery metal pin	Pb	BL	---	---	Comply	15 Jun 2021
		Cd	BL	---	---	Comply	
		Hg	BL	---	---	Comply	
		Cr(VI)▼	BL	---	---	Comply	
		PBBs	---	---	---	---	
		PBDEs	---	---	---	---	
		DBP	---	---	---	---	
		BBP	---	---	---	---	
		DEHP	---	---	---	---	
DIBP	---	---	---	---			
93	Orange plastic part	Pb	BL	---	---	Comply	15 Jun 2021
		Cd	BL	---	---	Comply	
		Hg	BL	---	---	Comply	
		Cr(VI)▼	BL	---	---	Comply	
		PBBs	BL	---	---	Comply	
		PBDEs	BL	---	---	Comply	
		DBP	---	BL	---	Comply	





Part No.	Part Description	Restricted Substances	Results of EDXRF <sup>(1)</sup>	Screening Result of PHTH <sup>(2)</sup>	Result of Wet Chemical Testing <sup>(3)</sup> (mg/kg)	Conclusion	Sample Submitted / Resubmitted Date
		BBP	---	BL	---	Comply	
		DEHP	---	BL	---	Comply	
		DIBP	---	BL	---	Comply	
94	Silvery metal solder	Pb	BL	---	---	Comply	15 Jun 2021
		Cd	BL	---	---	Comply	
		Hg	BL	---	---	Comply	
		Cr(VI)▼	BL	---	---	Comply	
		PBBs	---	---	---	---	
		PBDEs	---	---	---	---	
		DBP	---	---	---	---	
		BBP	---	---	---	---	
		DEHP	---	---	---	---	
		DIBP	---	---	---	---	
95	Orange plastic (wire insulation)	Pb	BL	---	---	Comply	15 Jun 2021
		Cd	BL	---	---	Comply	
		Hg	BL	---	---	Comply	
		Cr(VI)▼	BL	---	---	Comply	
		PBBs	BL	---	---	Comply	
		PBDEs	BL	---	---	Comply	
		DBP	---	BL	---	Comply	
		BBP	---	BL	---	Comply	
		DEHP	---	BL	---	Comply	
		DIBP	---	BL	---	Comply	



Part No.	Part Description	Restricted Substances	Results of EDXRF <sup>(1)</sup>	Screening Result of PHTH <sup>(2)</sup>	Result of Wet Chemical Testing <sup>(3)</sup> (mg/kg)	Conclusion	Sample Submitted / Resubmitted Date
96	Silvery metal wire	Pb	BL	---	---	Comply	15 Jun 2021
		Cd	BL	---	---	Comply	
		Hg	BL	---	---	Comply	
		Cr(VI)▼	BL	---	---	Comply	
		PBBs	---	---	---	---	
		PBDEs	---	---	---	---	
		DBP	---	---	---	---	
		BBP	---	---	---	---	
		DEHP	---	---	---	---	
		DIBP	---	---	---	---	
97	Red rubber shell	Pb	BL	---	---	Comply	15 Jun 2021
		Cd	BL	---	---	Comply	
		Hg	BL	---	---	Comply	
		Cr(VI)▼	BL	---	---	Comply	
		PBBs	BL	---	---	Comply	
		PBDEs	BL	---	---	Comply	
		DBP	---	BL	---	Comply	
		BBP	---	BL	---	Comply	
		DEHP	---	BL	---	Comply	
		DIBP	---	BL	---	Comply	
98	Red surfaced metal net w/white printing	Pb	BL	---	---	Comply	15 Jun 2021
		Cd	BL	---	---	Comply	
		Hg	BL	---	---	Comply	
		Cr(VI)▼	BL	---	---	Comply	
		PBBs	---	---	---	---	
		PBDEs	---	---	---	---	
		DBP	---	---	---	---	



Unless otherwise agreed in writing, this document is issued by the Company subject to its General Conditions of Service printed overleaf, available on request or accessible at <http://www.sgs.com/en/Terms-and-Conditions.aspx> and, for electronic format documents, subject to Terms and Conditions for Electronic Documents at <http://www.sgs.com/en/Terms-and-Conditions/Terms-e-Documents.aspx>. Attention is drawn to the limitation of liability, indemnification and jurisdiction issues defined therein. Any holder of this document is advised that information contained hereon reflects the Company's findings at the time of its intervention only and within the limits of Client's instructions, if any. The Company's sole responsibility is to its Client and this document does not exonerate parties to a transaction from exercising all their rights and obligations under the transaction documents. This document cannot be reproduced except in full, without prior written approval of the Company. Any unauthorized alteration, forgery or falsification of the content or appearance of this document is unlawful and offenders may be prosecuted to the fullest extent of the law. Unless otherwise stated the results shown in this test report refer only to the sample(s) tested.

Attention: To check the authenticity of testing / inspection report & certificate, please contact us at telephone: (86-755) 8307 1443, or email: [CN.Doccheck@sgs.com](mailto:CN.Doccheck@sgs.com)

Part No.	Part Description	Restricted Substances	Results of EDXRF <sup>(1)</sup>	Screening Result of PHTH <sup>(2)</sup>	Result of Wet Chemical Testing <sup>(3)</sup> (mg/kg)	Conclusion	Sample Submitted / Resubmitted Date
		BBP DEHP DIBP	--- --- ---	--- --- ---	--- --- ---	--- --- ---	
99	White plastic shell	Pb Cd Hg Cr(VI)▼ PBBs PBDEs DBP BBP DEHP DIBP	BL BL BL BL BL BL --- --- --- ---	--- --- --- --- --- --- BL BL BL BL	--- --- --- --- --- --- --- --- --- ---	Comply Comply Comply Comply Comply Comply Comply Comply Comply Comply	15 Jun 2021
100	Red rubber cover	Pb Cd Hg Cr(VI)▼ PBBs PBDEs DBP BBP DEHP DIBP	BL BL BL BL BL BL --- --- --- ---	--- --- --- --- --- --- BL BL BL BL	--- --- --- --- --- --- --- --- --- ---	Comply Comply Comply Comply Comply Comply Comply Comply Comply Comply	15 Jun 2021



Part No.	Part Description	Restricted Substances	Results of EDXRF <sup>(1)</sup>	Screening Result of PHTH <sup>(2)</sup>	Result of Wet Chemical Testing <sup>(3)</sup> (mg/kg)	Conclusion	Sample Submitted / Resubmitted Date
101	White plastic part	Pb	BL	---	---	Comply	15 Jun 2021
		Cd	BL	---	---	Comply	
		Hg	BL	---	---	Comply	
		Cr(VI)▼	BL	---	---	Comply	
		PBBs	BL	---	---	Comply	
		PBDEs	BL	---	---	Comply	
		DBP	---	BL	---	Comply	
		BBP	---	BL	---	Comply	
		DEHP	---	BL	---	Comply	
DIBP	---	BL	---	Comply			
102	Blue rubber shell	Pb	BL	---	---	Comply	15 Jun 2021
		Cd	BL	---	---	Comply	
		Hg	BL	---	---	Comply	
		Cr(VI)▼	BL	---	---	Comply	
		PBBs	BL	---	---	Comply	
		PBDEs	BL	---	---	Comply	
		DBP	---	BL	---	Comply	
		BBP	---	BL	---	Comply	
		DEHP	---	BL	---	Comply	
DIBP	---	BL	---	Comply			
103	Blue surfaced metal net	Pb	BL	---	---	Comply	15 Jun 2021
		Cd	BL	---	---	Comply	
		Hg	BL	---	---	Comply	
		Cr(VI)▼	BL	---	---	Comply	
		PBBs	---	---	---	---	
		PBDEs	---	---	---	---	
		DBP	---	---	---	---	



Part No.	Part Description	Restricted Substances	Results of EDXRF <sup>(1)</sup>	Screening Result of PHTH <sup>(2)</sup>	Result of Wet Chemical Testing <sup>(3)</sup> (mg/kg)	Conclusion	Sample Submitted / Resubmitted Date
		BBP DEHP DIBP	--- --- ---	--- --- ---	--- --- ---	--- --- ---	
104	White plastic shell	Pb Cd Hg Cr(VI)▼ PBBs PBDEs DBP BBP DEHP DIBP	BL BL BL BL BL BL --- --- --- ---	--- --- --- --- --- --- BL BL BL BL	--- --- --- --- --- --- --- --- --- ---	Comply Comply Comply Comply Comply Comply Comply Comply Comply Comply	15 Jun 2021
105	Blue rubber cover	Pb Cd Hg Cr(VI)▼ PBBs PBDEs DBP BBP DEHP DIBP	BL BL BL BL BL BL --- --- --- ---	--- --- --- --- --- --- BL BL BL BL	--- --- --- --- --- --- --- --- --- ---	Comply Comply Comply Comply Comply Comply Comply Comply Comply Comply	15 Jun 2021





Part No.	Part Description	Restricted Substances	Results of EDXRF <sup>(1)</sup>	Screening Result of PHTH <sup>(2)</sup>	Result of Wet Chemical Testing <sup>(3)</sup> (mg/kg)	Conclusion	Sample Submitted / Resubmitted Date
106	White plastic part	Pb	BL	---	---	Comply	15 Jun 2021
		Cd	BL	---	---	Comply	
		Hg	BL	---	---	Comply	
		Cr(VI)▼	BL	---	---	Comply	
		PBBs	BL	---	---	Comply	
		PBDEs	BL	---	---	Comply	
		DBP	---	BL	---	Comply	
		BBP	---	BL	---	Comply	
		DEHP	---	BL	---	Comply	
DIBP	---	BL	---	Comply			
107	White paper sheet	Pb	BL	---	---	Comply	15 Jun 2021
		Cd	BL	---	---	Comply	
		Hg	BL	---	---	Comply	
		Cr(VI)▼	BL	---	---	Comply	
		PBBs	BL	---	---	Comply	
		PBDEs	BL	---	---	Comply	
		DBP	---	BL	---	Comply	
		BBP	---	BL	---	Comply	
		DEHP	---	BL	---	Comply	
DIBP	---	BL	---	Comply			
108	Transparent adhesive plastic sheet	Pb	BL	---	---	Comply	15 Jun 2021
		Cd	BL	---	---	Comply	
		Hg	BL	---	---	Comply	
		Cr(VI)▼	BL	---	---	Comply	
		PBBs	BL	---	---	Comply	
		PBDEs	BL	---	---	Comply	
		DBP	---	BL	---	Comply	



Unless otherwise agreed in writing, this document is issued by the Company subject to its General Conditions of Service printed overleaf, available on request or accessible at <http://www.sgs.com/en/Terms-and-Conditions.aspx> and, for electronic format documents, subject to Terms and Conditions for Electronic Documents at <http://www.sgs.com/en/Terms-and-Conditions/Terms-e-Documents.aspx>. Attention is drawn to the limitation of liability, indemnification and jurisdiction issues defined therein. Any holder of this document is advised that information contained hereon reflects the Company's findings at the time of its intervention only and within the limits of Client's instructions, if any. The Company's sole responsibility is to its Client and this document does not exonerate parties to a transaction from exercising all their rights and obligations under the transaction documents. This document cannot be reproduced except in full, without prior written approval of the Company. Any unauthorized alteration, forgery or falsification of the content or appearance of this document is unlawful and offenders may be prosecuted to the fullest extent of the law. Unless otherwise stated the results shown in this test report refer only to the sample(s) tested.

Attention: To check the authenticity of testing / inspection report & certificate, please contact us at telephone: (86-755) 8307 1443, or email: [CN.Doccheck@sgs.com](mailto:CN.Doccheck@sgs.com)

Part No.	Part Description	Restricted Substances	Results of EDXRF <sup>(1)</sup>	Screening Result of PHTH <sup>(2)</sup>	Result of Wet Chemical Testing <sup>(3)</sup> (mg/kg)	Conclusion	Sample Submitted / Resubmitted Date
		BBP	---	BL	---	Comply	
		DEHP	---	BL	---	Comply	
		DIBP	---	BL	---	Comply	
109	Multicolor paper shell	Pb	BL	---	---	Comply	15 Jun 2021
		Cd	BL	---	---	Comply	
		Hg	BL	---	---	Comply	
		Cr(VI)▼	BL	---	---	Comply	
		PBBs	BL	---	---	Comply	
		PBDEs	BL	---	---	Comply	
		DBP	---	BL	---	Comply	
		BBP	---	BL	---	Comply	
		DEHP	---	BL	---	Comply	
		DIBP	---	BL	---	Comply	
110	Transparent adhesive plastic sheet	Pb	BL	---	---	Comply	15 Jun 2021
		Cd	BL	---	---	Comply	
		Hg	BL	---	---	Comply	
		Cr(VI)▼	BL	---	---	Comply	
		PBBs	BL	---	---	Comply	
		PBDEs	BL	---	---	Comply	
		DBP	---	BL	---	Comply	
		BBP	---	BL	---	Comply	
		DEHP	---	BL	---	Comply	
		DIBP	---	BL	---	Comply	



Part No.	Part Description	Restricted Substances	Results of EDXRF <sup>(1)</sup>	Screening Result of PHTH <sup>(2)</sup>	Result of Wet Chemical Testing <sup>(3)</sup> (mg/kg)	Conclusion	Sample Submitted / Resubmitted Date
111	White paper sheet	Pb	BL	---	---	Comply	15 Jun 2021
		Cd	BL	---	---	Comply	
		Hg	BL	---	---	Comply	
		Cr(VI)▼	BL	---	---	Comply	
		PBBs	BL	---	---	Comply	
		PBDEs	BL	---	---	Comply	
		DBP	---	BL	---	Comply	
		BBP	---	BL	---	Comply	
		DEHP	---	BL	---	Comply	
DIBP	---	BL	---	Comply			
112	White paper sheet	Pb	BL	---	---	Comply	15 Jun 2021
		Cd	BL	---	---	Comply	
		Hg	BL	---	---	Comply	
		Cr(VI)▼	BL	---	---	Comply	
		PBBs	BL	---	---	Comply	
		PBDEs	BL	---	---	Comply	
		DBP	---	BL	---	Comply	
		BBP	---	BL	---	Comply	
		DEHP	---	BL	---	Comply	
DIBP	---	BL	---	Comply			
113	White paper sheet	Pb	BL	---	---	Comply	15 Jun 2021
		Cd	BL	---	---	Comply	
		Hg	BL	---	---	Comply	
		Cr(VI)▼	BL	---	---	Comply	
		PBBs	BL	---	---	Comply	
		PBDEs	BL	---	---	Comply	
		DBP	---	BL	---	Comply	



Part No.	Part Description	Restricted Substances	Results of EDXRF <sup>(1)</sup>	Screening Result of PHTH <sup>(2)</sup>	Result of Wet Chemical Testing <sup>(3)</sup> (mg/kg)	Conclusion	Sample Submitted / Resubmitted Date
		BBP	---	BL	---	Comply	
		DEHP	---	BL	---	Comply	
		DIBP	---	BL	---	Comply	
114	White paper sheet w/multicolor printing	Pb	BL	---	---	Comply	15 Jun 2021
		Cd	BL	---	---	Comply	
		Hg	BL	---	---	Comply	
		Cr(VI)▼	BL	---	---	Comply	
		PBBs	BL	---	---	Comply	
		PBDEs	BL	---	---	Comply	
		DBP	---	BL	---	Comply	
		BBP	---	BL	---	Comply	
		DEHP	---	BL	---	Comply	
		DIBP	---	BL	---	Comply	
115	White paper sheet w/black printing	Pb	BL	---	---	Comply	15 Jun 2021
		Cd	BL	---	---	Comply	
		Hg	BL	---	---	Comply	
		Cr(VI)▼	BL	---	---	Comply	
		PBBs	BL	---	---	Comply	
		PBDEs	BL	---	---	Comply	
		DBP	---	BL	---	Comply	
		BBP	---	BL	---	Comply	
		DEHP	---	BL	---	Comply	
		DIBP	---	BL	---	Comply	



Part No.	Part Description	Restricted Substances	Results of EDXRF <sup>(1)</sup>	Screening Result of PHTH <sup>(2)</sup>	Result of Wet Chemical Testing <sup>(3)</sup> (mg/kg)	Conclusion	Sample Submitted / Resubmitted Date
116	Black/white paper sheet	Pb	BL	---	---	Comply	15 Jun 2021
		Cd	BL	---	---	Comply	
		Hg	BL	---	---	Comply	
		Cr(VI)▼	BL	---	---	Comply	
		PBBs	BL	---	---	Comply	
		PBDEs	BL	---	---	Comply	
		DBP	---	BL	---	Comply	
		BBP	---	BL	---	Comply	
		DEHP	---	BL	---	Comply	
DIBP	---	BL	---	Comply			
117	Silvery metal part	Pb	BL	---	---	Comply	15 Jun 2021
		Cd	BL	---	---	Comply	
		Hg	BL	---	---	Comply	
		Cr(VI)▼	IN	---	ND	Comply	
		PBBs	---	---	---	---	
		PBDEs	---	---	---	---	
		DBP	---	---	---	---	
		BBP	---	---	---	---	
		DEHP	---	---	---	---	
DIBP	---	---	---	---			
118	Brown paper shell w/black printing	Pb	BL	---	---	Comply	15 Jun 2021
		Cd	BL	---	---	Comply	
		Hg	BL	---	---	Comply	
		Cr(VI)▼	BL	---	---	Comply	
		PBBs	BL	---	---	Comply	
		PBDEs	BL	---	---	Comply	
		DBP	---	BL	---	Comply	



Unless otherwise agreed in writing, this document is issued by the Company subject to its General Conditions of Service printed overleaf, available on request or accessible at <http://www.sgs.com/en/Terms-and-Conditions.aspx> and, for electronic format documents, subject to Terms and Conditions for Electronic Documents at <http://www.sgs.com/en/Terms-and-Conditions/Terms-e-Documents.aspx>. Attention is drawn to the limitation of liability, indemnification and jurisdiction issues defined therein. Any holder of this document is advised that information contained hereon reflects the Company's findings at the time of its intervention only and within the limits of Client's instructions, if any. The Company's sole responsibility is to its Client and this document does not exonerate parties to a transaction from exercising all their rights and obligations under the transaction documents. This document cannot be reproduced except in full, without prior written approval of the Company. Any unauthorized alteration, forgery or falsification of the content or appearance of this document is unlawful and offenders may be prosecuted to the fullest extent of the law. Unless otherwise stated the results shown in this test report refer only to the sample(s) tested.

Attention: To check the authenticity of testing / inspection report & certificate, please contact us at telephone: (86-755) 8307 1443, or email: [CN.Doccheck@sgs.com](mailto:CN.Doccheck@sgs.com)



Part No.	Part Description	Restricted Substances	Results of EDXRF <sup>(1)</sup>	Screening Result of PHTH <sup>(2)</sup>	Result of Wet Chemical Testing <sup>(3)</sup> (mg/kg)	Conclusion	Sample Submitted / Resubmitted Date
		BBP	---	BL	---	Comply	
		DEHP	---	BL	---	Comply	
		DIBP	---	BL	---	Comply	
119	Multicolor paper shell	Pb	BL	---	---	Comply	15 Jun 2021
		Cd	BL	---	---	Comply	
		Hg	BL	---	---	Comply	
		Cr(VI)▼	BL	---	---	Comply	
		PBBs	BL	---	---	Comply	
		PBDEs	BL	---	---	Comply	
		DBP	---	BL	---	Comply	
		BBP	---	BL	---	Comply	
		DEHP	---	BL	---	Comply	
		DIBP	---	BL	---	Comply	
120	Multicolor paper shell	Pb	BL	---	---	Comply	15 Jun 2021
		Cd	BL	---	---	Comply	
		Hg	BL	---	---	Comply	
		Cr(VI)▼	BL	---	---	Comply	
		PBBs	BL	---	---	Comply	
		PBDEs	BL	---	---	Comply	
		DBP	---	BL	---	Comply	
		BBP	---	BL	---	Comply	
		DEHP	---	BL	---	Comply	
		DIBP	---	BL	---	Comply	



**Remark**

(1) (a) There are the results on total Br while test items on restricted substances are PBBs and PBDEs.

There is the result on total Cr while test item on restricted substances is Cr(VI).

(b) Results are obtained by EDXRF for primary screening, and further chemical testing by ICP-OES (for Cd, Pb, Hg), UV-Vis (for Cr(VI)) and GC-MS (for PBBs, PBDEs) is recommended to be performed if the concentration exceeds the below warning value according to IEC62321-3-1:2013 (unit: mg/kg).

Element	Polymer	Metal	Composite Materials
Cd	$BL \leq (70-3\sigma) < X < (130+3\sigma) \leq OL$	$BL \leq (70-3\sigma) < X < (130+3\sigma) \leq OL$	$LOD < X < (150+3\sigma) \leq OL$
Pb	$BL \leq (700-3\sigma) < X < (1300+3\sigma) \leq OL$	$BL \leq (700-3\sigma) < X < (1300+3\sigma) \leq OL$	$BL \leq (500-3\sigma) < X < (1500+3\sigma) \leq OL$
Hg	$BL \leq (700-3\sigma) < X < (1300+3\sigma) \leq OL$	$BL \leq (700-3\sigma) < X < (1300+3\sigma) \leq OL$	$BL \leq (500-3\sigma) < X < (1500+3\sigma) \leq OL$
Br	$BL \leq (300-3\sigma) < X$	Not Applicable	$BL \leq (250-3\sigma) < X$
Cr	$BL \leq (700-3\sigma) < X$	$BL \leq (700-3\sigma) < X$	$BL \leq (500-3\sigma) < X$

(c) BL = Below Limit, OL = Over Limit, IN = Inconclusive, LOD = Limit of Detection.

(d) The XRF screening test for RoHS elements – The reading may be different to the actual content in the sample be of non-uniformity composition.

(2) Screening results of PHTH are for primary screening, and further chemical testing by GC-MS (for DBP, BBP, DEHP and DIBP) are recommended to be performed if the concentration exceeds the below warning value(unit: mg/kg).

Compound	Polymer
DBP	$BL \leq 600 < X$
BBP	$BL \leq 600 < X$
DEHP	$BL \leq 600 < X$
DIBP	$BL \leq 600 < X$

(3) (a) mg/kg = 0.0001%, MDL=Method detection Limit, ND = Not Detected (<MDL), --- = Not Applicable, - = Without BOM.

(b) Unit and MDL in wet chemical test

Test Item	Pb	Cd	Hg	DBP	BBP	DEHP	DIBP
Unit	mg/kg	mg/kg	mg/kg	mg/kg	mg/kg	mg/kg	mg/kg
MDL	10	10	10	100	100	100	100

The MDL for single compound of PBBs and PBDEs is 100 mg/kg,

MDL of Cr(VI) for polymer, composite and leather sample is 10 mg/kg.

MDL of Cr(VI) for metal sample is 0.10µg/cm<sup>2</sup>.



(c) ▼ =Metal sample

a. The sample is positive for Cr(VI) if the Cr(VI) concentration is greater than 0.13 µg/cm<sup>2</sup>.

The sample coating is considered to contain Cr(VI)

b. The sample is negative for Cr(VI) if Cr(VI) is ND (concentration less than 0.10 µg/cm<sup>2</sup>).

The coating is considered a non- Cr(VI) based coating

c. The result between 0.10 µg/cm<sup>2</sup> and 0.13 µg/cm<sup>2</sup> is considered to be inconclusive

- unavoidable coating variations may influence the determination

Information on storage conditions and production date of the tested sample is unavailable and thus Cr(VI) results represent status of the sample at the time of testing.

(4) Restricted substances and maximum concentration values tolerated by weight in homogeneous materials under RoHS Directive: Cd: 0.01%, Pb/Hg/Cr(VI)/PBBs/PBDEs/DEHP/DBP/BBP/DIBP: 0.1%. The limit is quoted from RoHS Directive (EU) 2015/863.

(5) IEC 62321 series is equivalent to EN 62321 series

[https://www.cenelec.eu/dyn/www/f?p=104:30:1742232870351101:::FSP\\_ORG\\_ID,FSP\\_LANG\\_ID:1258637,25](https://www.cenelec.eu/dyn/www/f?p=104:30:1742232870351101:::FSP_ORG_ID,FSP_LANG_ID:1258637,25)

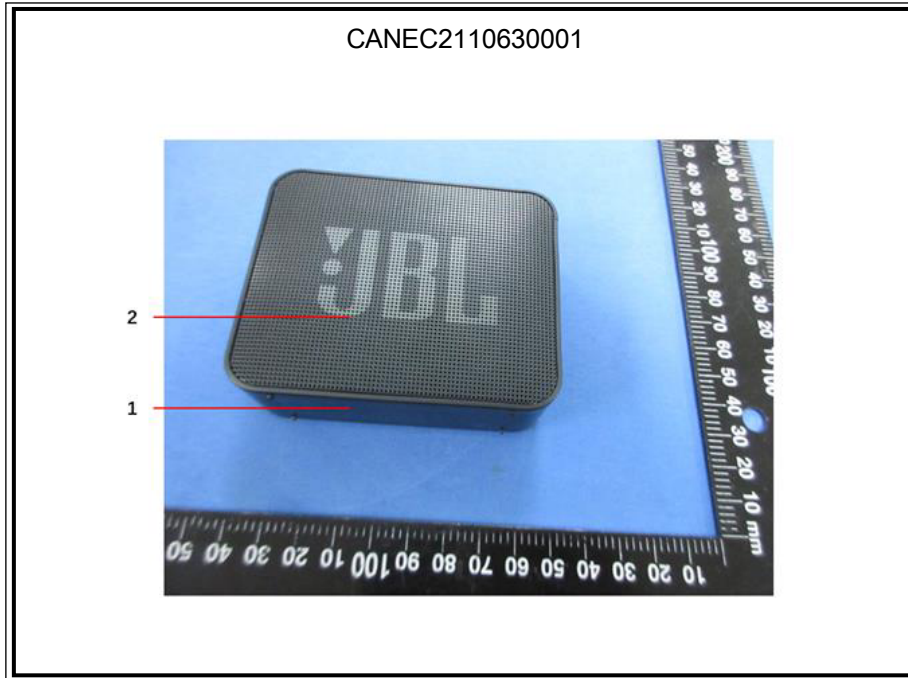
(6) ▲=According to the declaration from the client, Lead (Pb) in No.51 is exempted by EU RoHS directive 2011/65/EU based on [ANNEX III 7(a)]: Lead in high melting temperature type solders (i.e. lead-based alloys containing 85 % by weight or more lead).



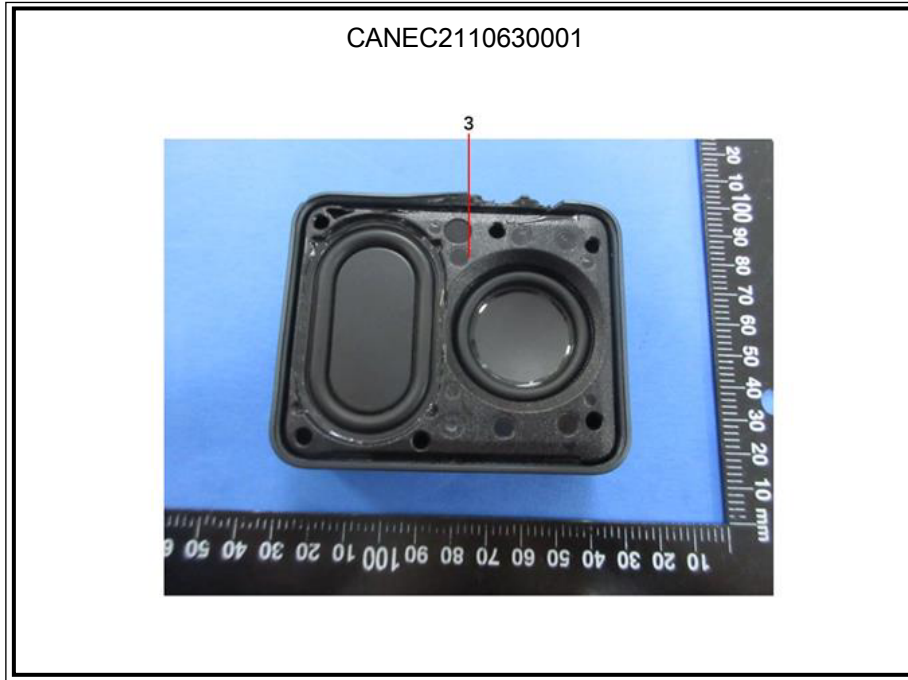
Unless otherwise agreed in writing, this document is issued by the Company subject to its General Conditions of Service printed overleaf, available on request or accessible at <http://www.sgs.com/en/Terms-and-Conditions.aspx> and, for electronic format documents, subject to Terms and Conditions for Electronic Documents at <http://www.sgs.com/en/Terms-and-Conditions/Terms-e-Documents.aspx>. Attention is drawn to the limitation of liability, indemnification and jurisdiction issues defined therein. Any holder of this document is advised that information contained hereon reflects the Company's findings at the time of its intervention only and within the limits of Client's instructions, if any. The Company's sole responsibility is to its Client and this document does not exonerate parties to a transaction from exercising all their rights and obligations under the transaction documents. This document cannot be reproduced except in full, without prior written approval of the Company. Any unauthorized alteration, forgery or falsification of the content or appearance of this document is unlawful and offenders may be prosecuted to the fullest extent of the law. Unless otherwise stated the results shown in this test report refer only to the sample(s) tested.

Attention: To check the authenticity of testing /inspection report & certificate, please contact us at telephone: (86-755) 8307 1443, or email: [CN.Doccheck@sgs.com](mailto:CN.Doccheck@sgs.com)

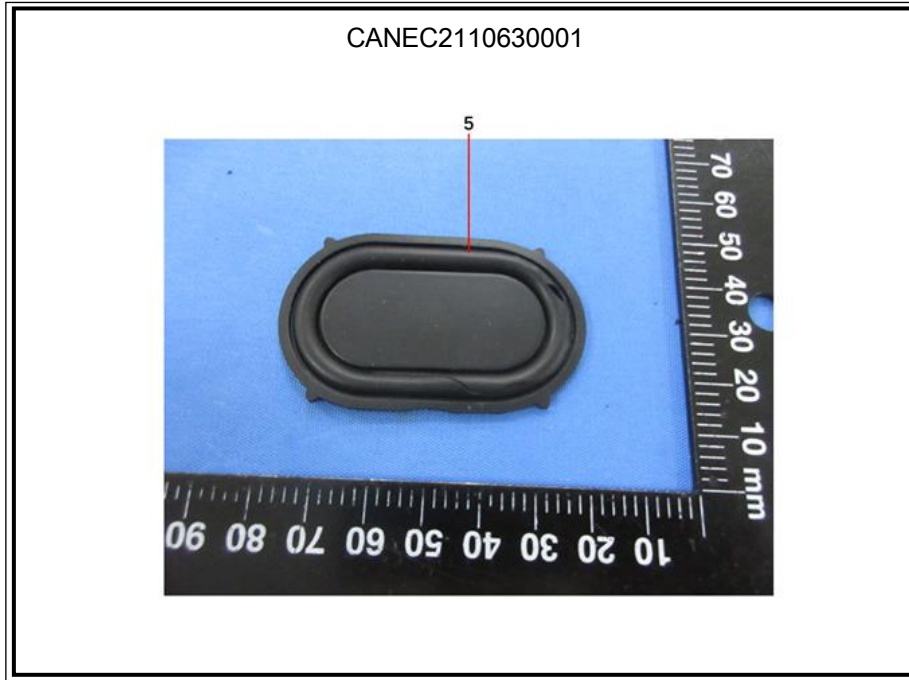
Sample photo:





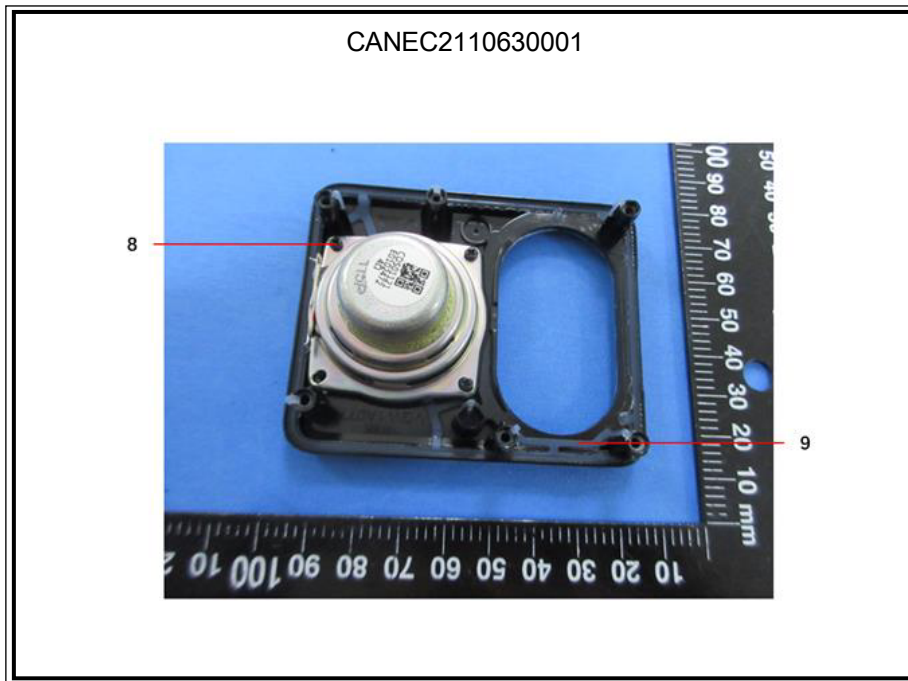
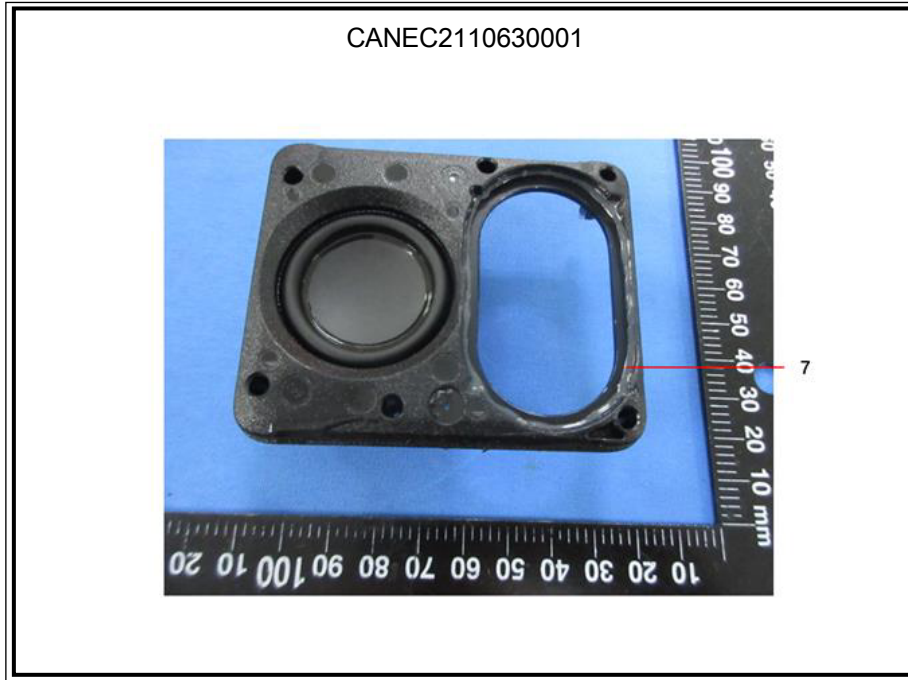


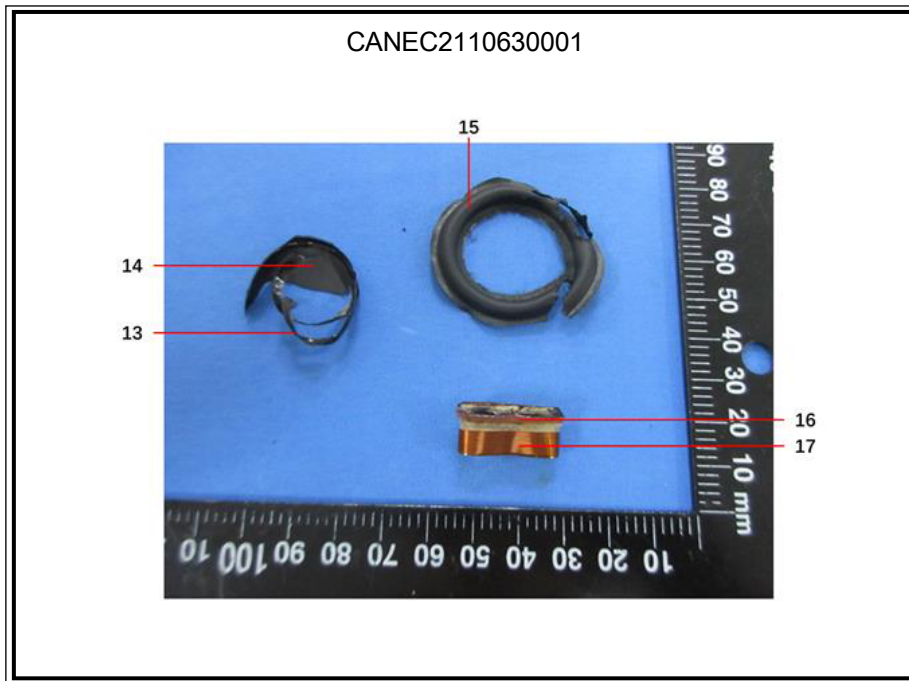
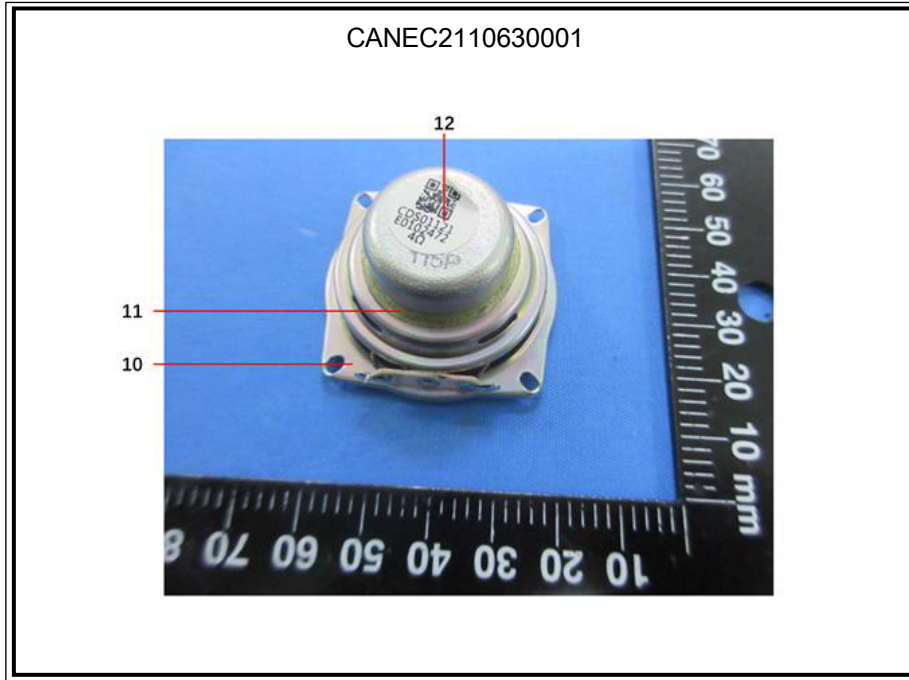




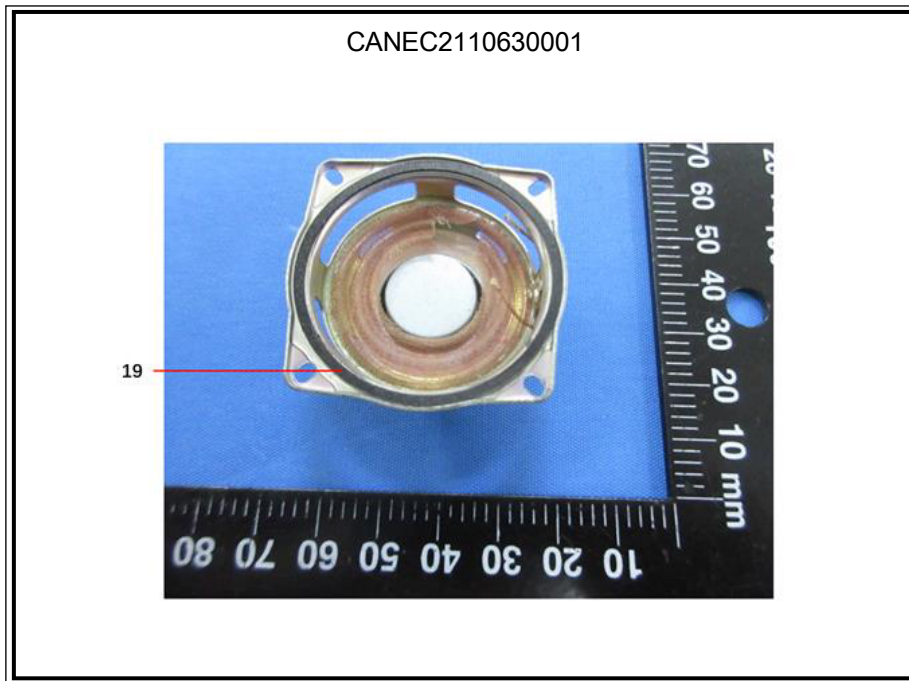
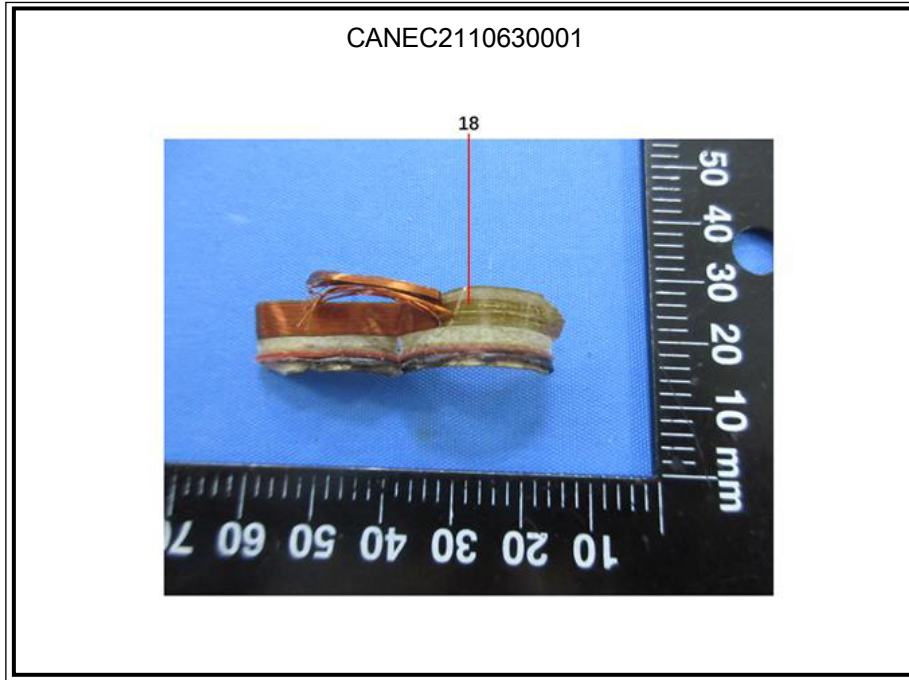
Unless otherwise agreed in writing, this document is issued by the Company subject to its General Conditions of Service printed overleaf, available on request or accessible at <http://www.sgs.com/en/Terms-and-Conditions.aspx> and, for electronic format documents, subject to Terms and Conditions for Electronic Documents at <http://www.sgs.com/en/Terms-and-Conditions/Terms-e-Documents.aspx>. Attention is drawn to the limitation of liability, indemnification and jurisdiction issues defined therein. Any holder of this document is advised that information contained hereon reflects the Company's findings at the time of its intervention only and within the limits of Client's instructions, if any. The Company's sole responsibility is to its Client and this document does not exonerate parties to a transaction from exercising all their rights and obligations under the transaction documents. This document cannot be reproduced except in full, without prior written approval of the Company. Any unauthorized alteration, forgery or falsification of the content or appearance of this document is unlawful and offenders may be prosecuted to the fullest extent of the law. Unless otherwise stated the results shown in this test report refer only to the sample(s) tested.

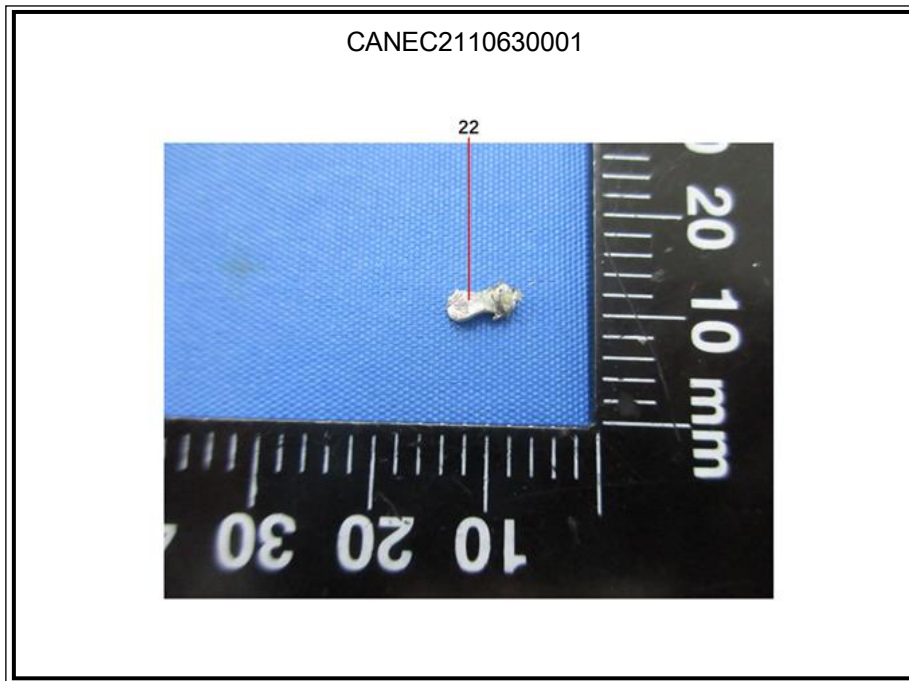
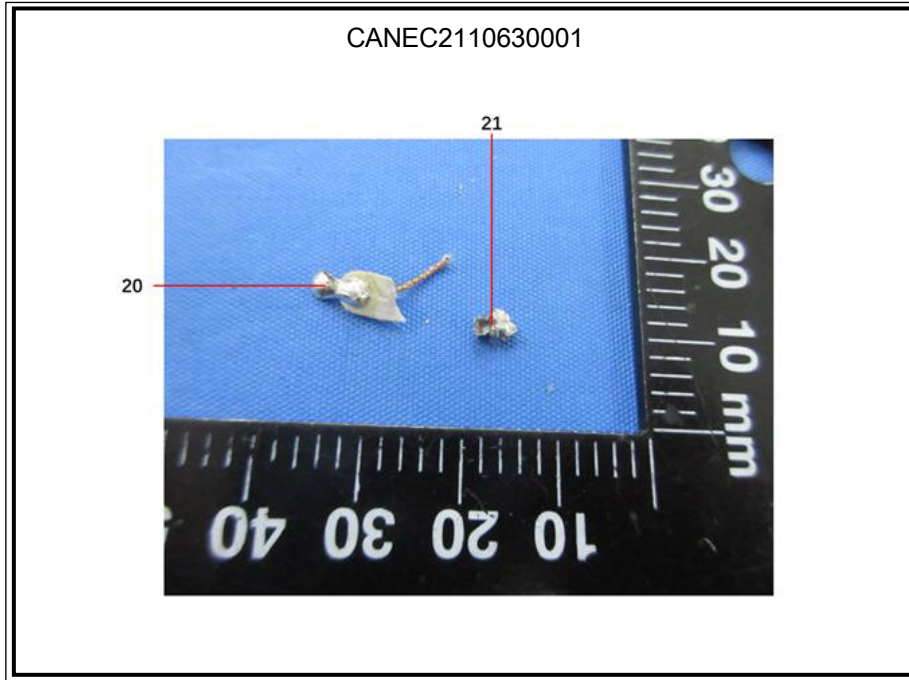
Attention: To check the authenticity of testing / inspection report & certificate, please contact us at telephone: (86-755) 8307 1443, or email: [CN.Doccheck@sgs.com](mailto:CN.Doccheck@sgs.com)



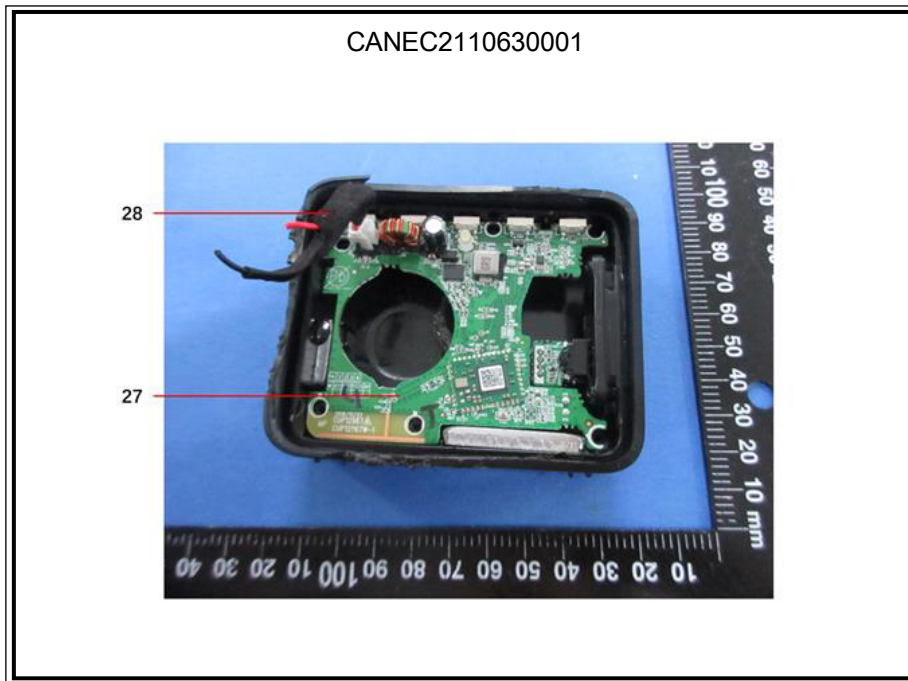
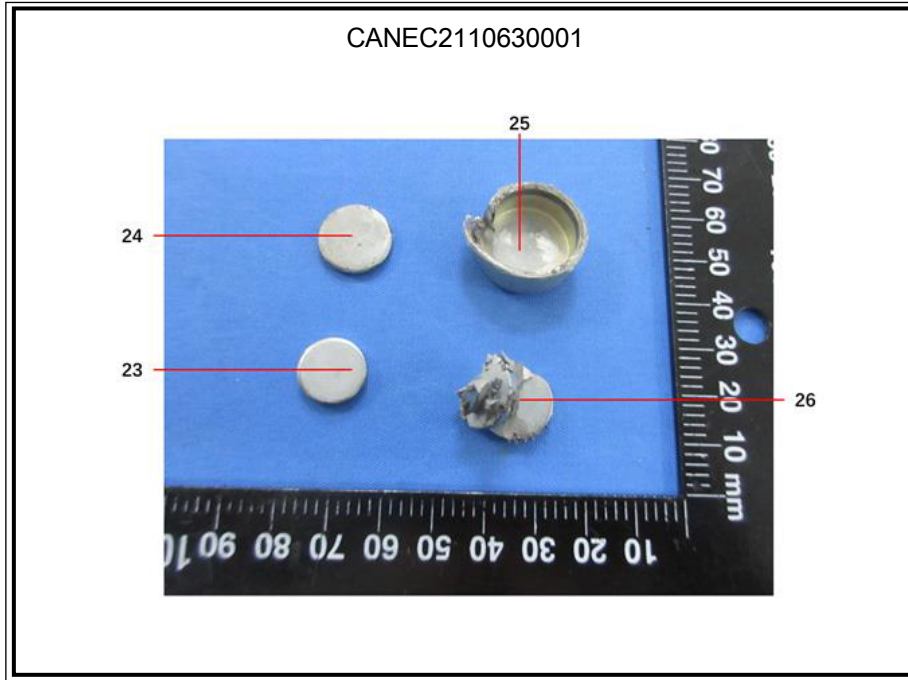


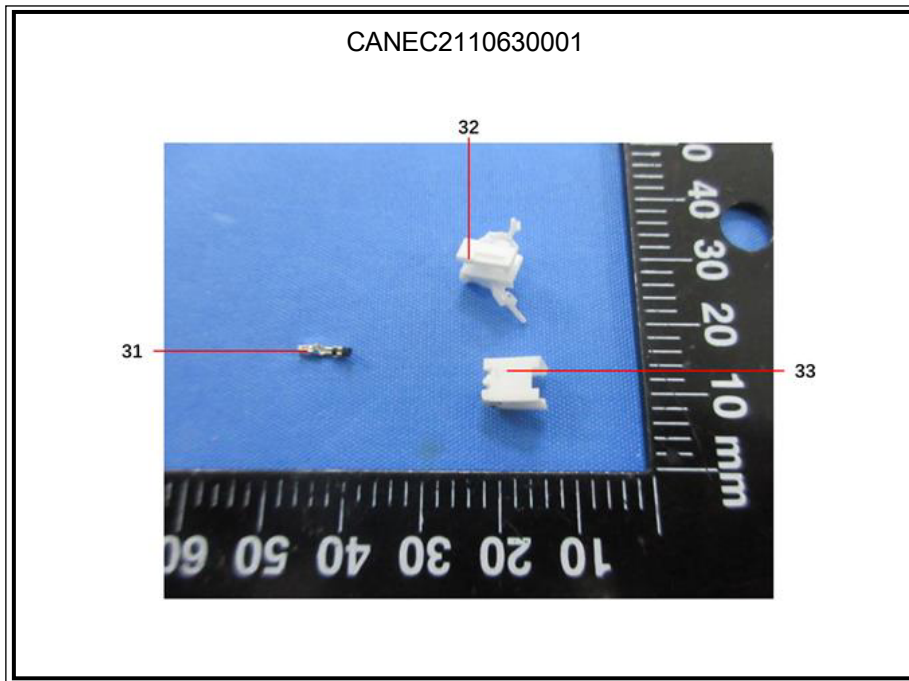
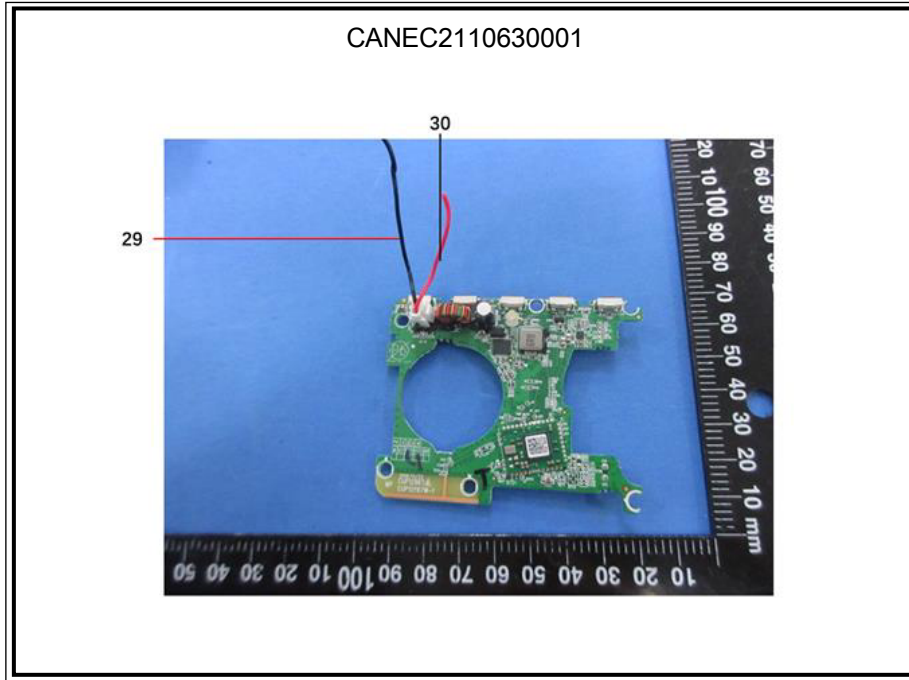


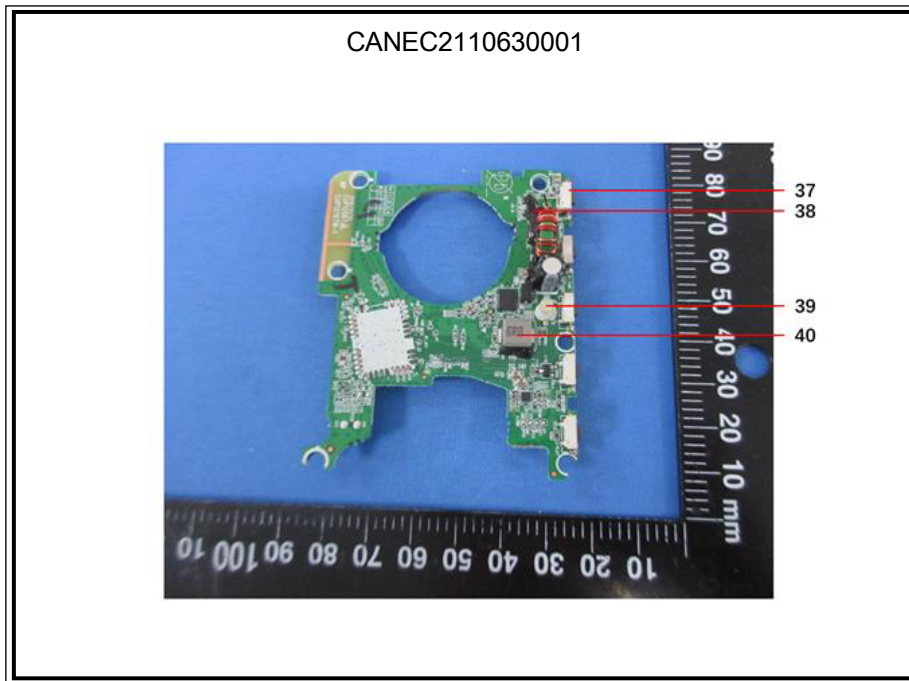
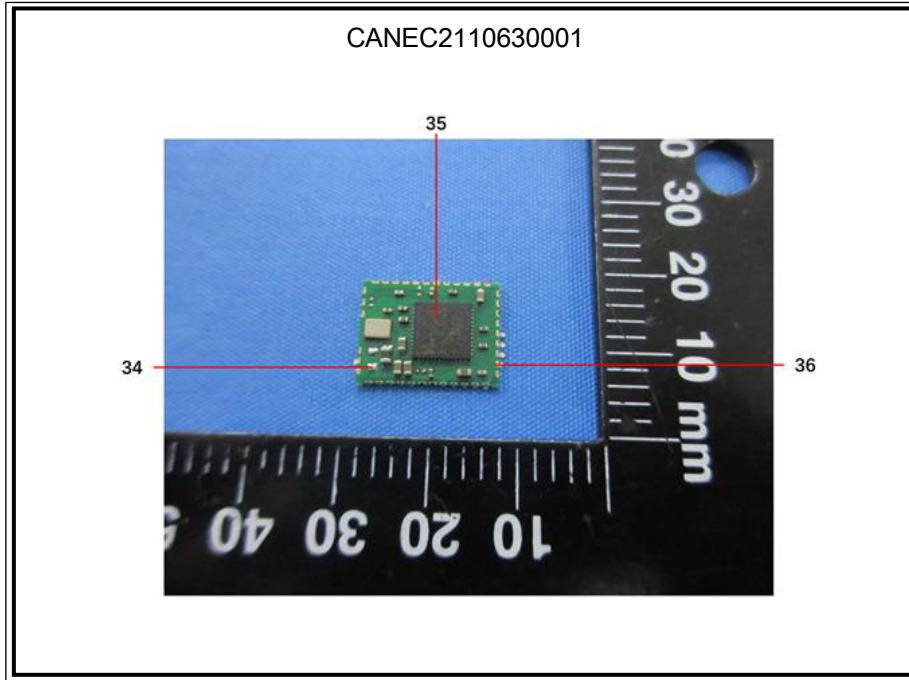




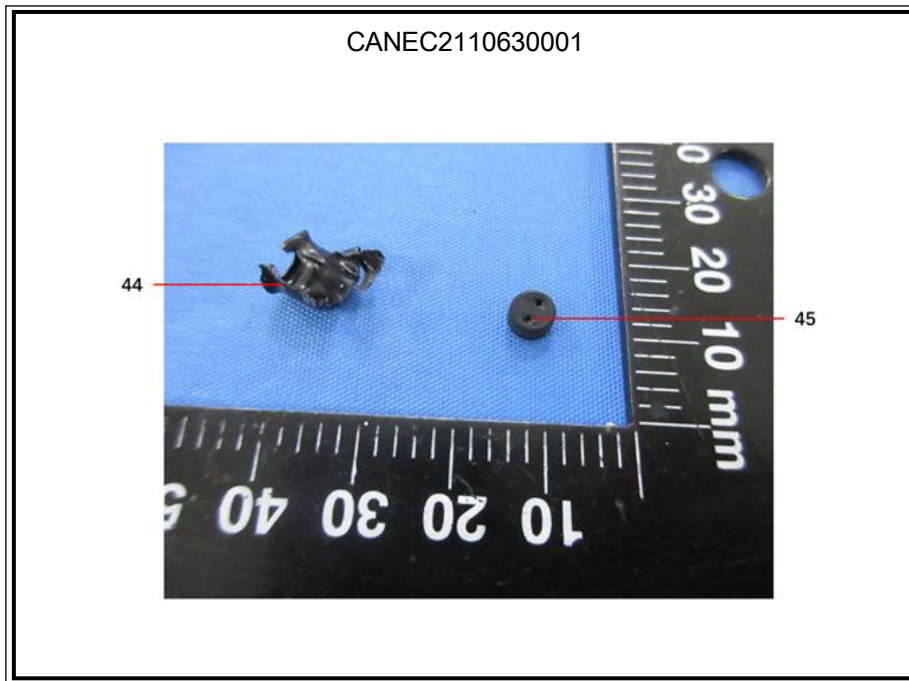
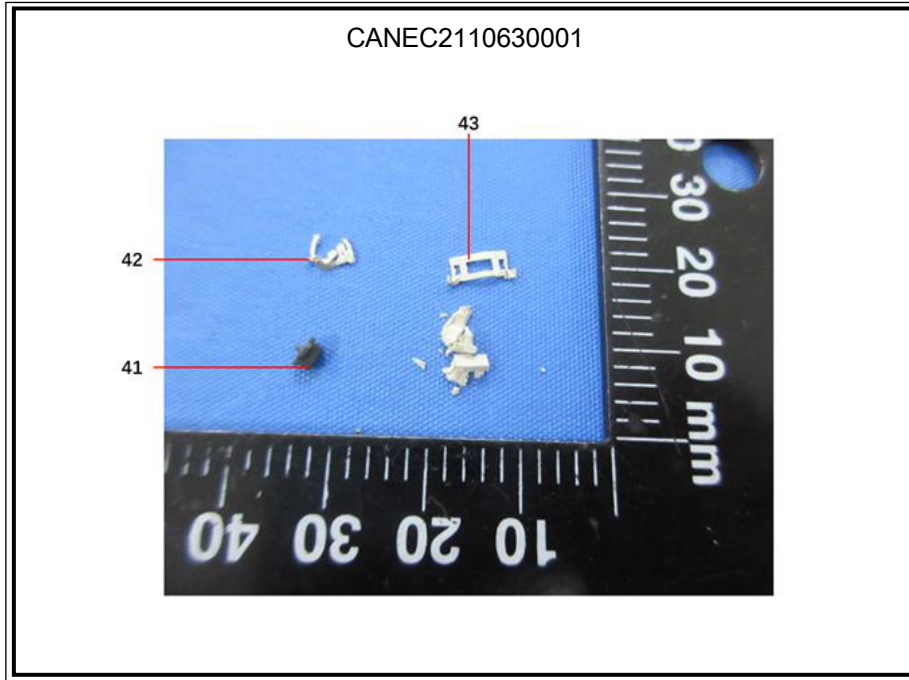


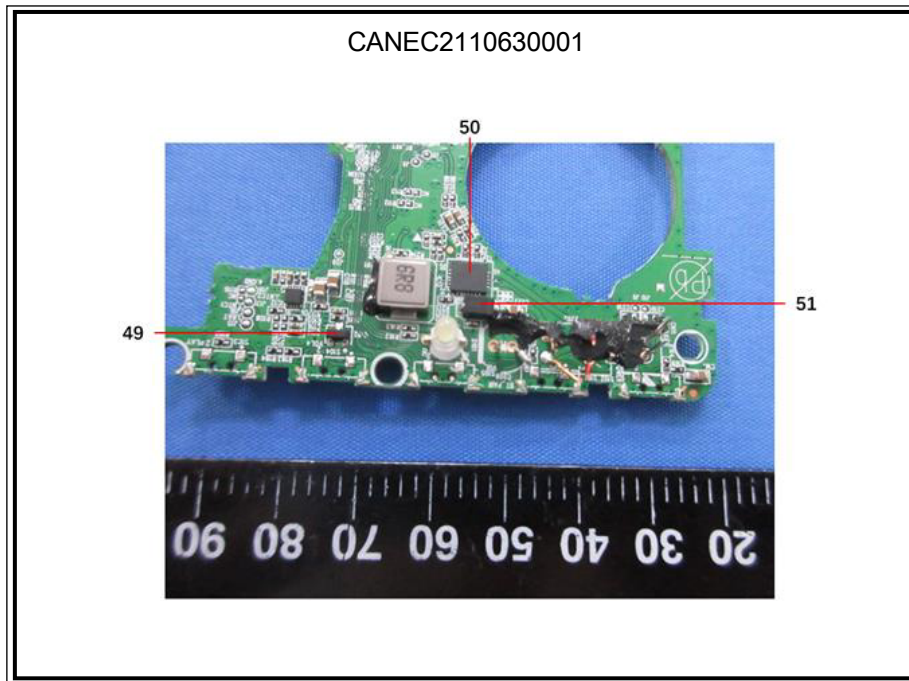
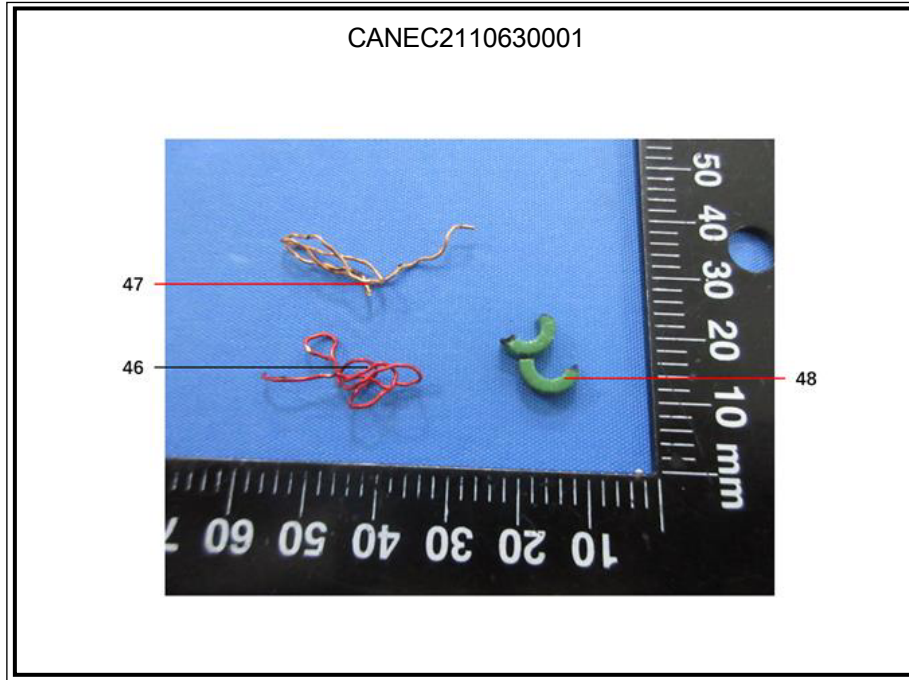




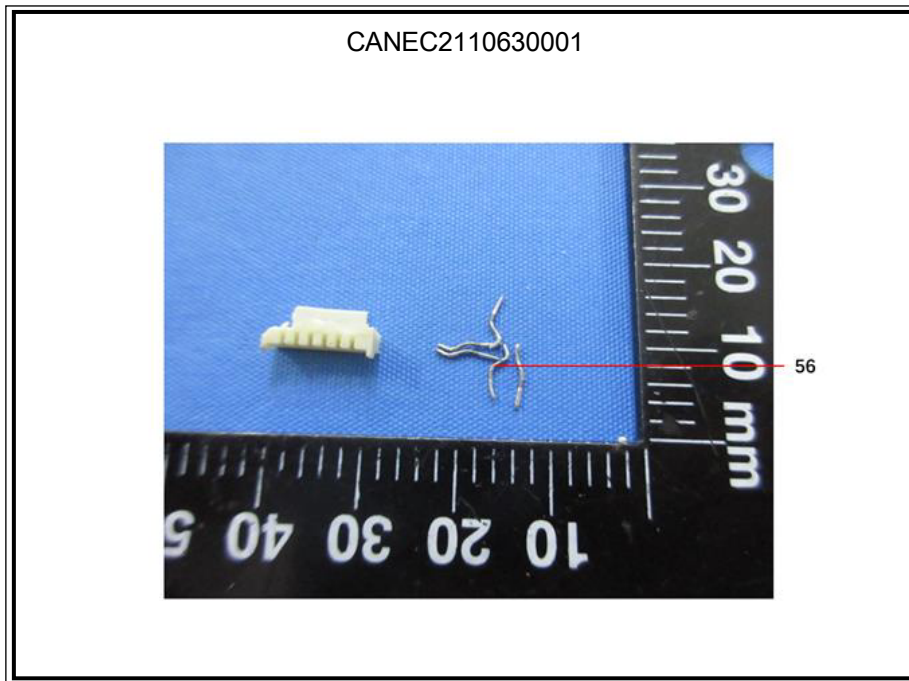
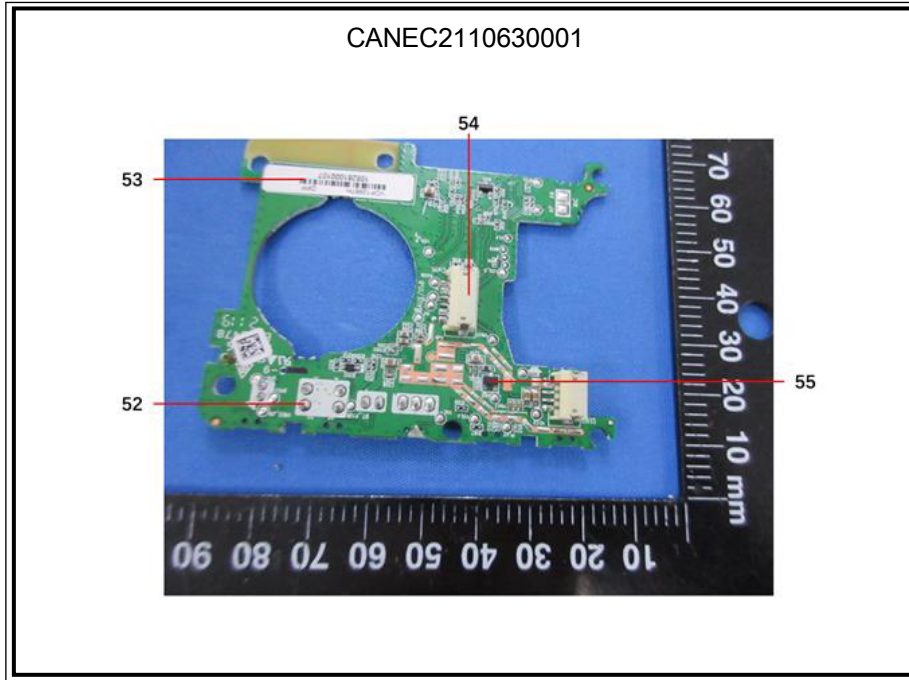


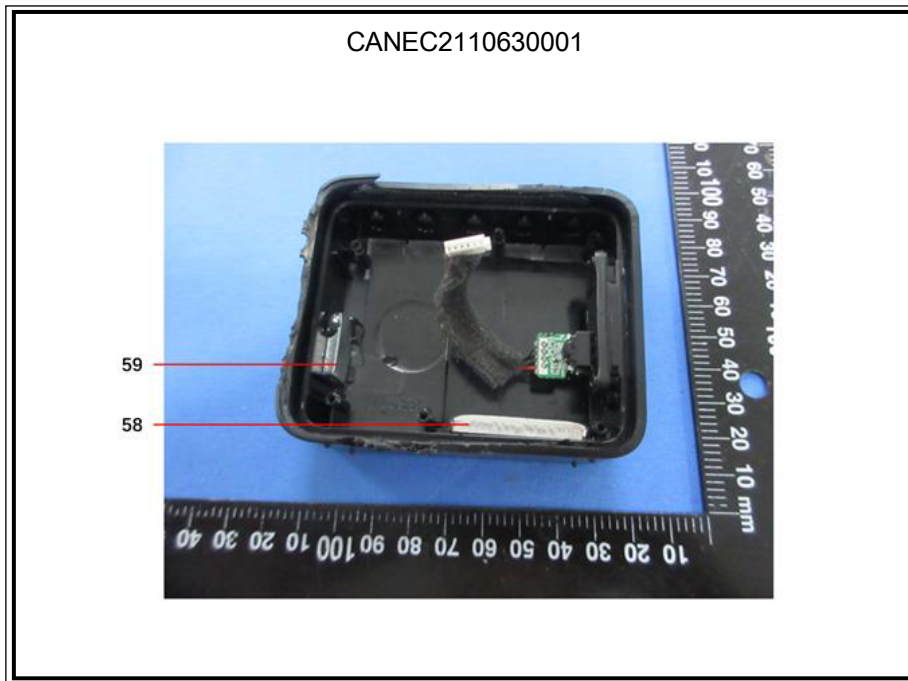
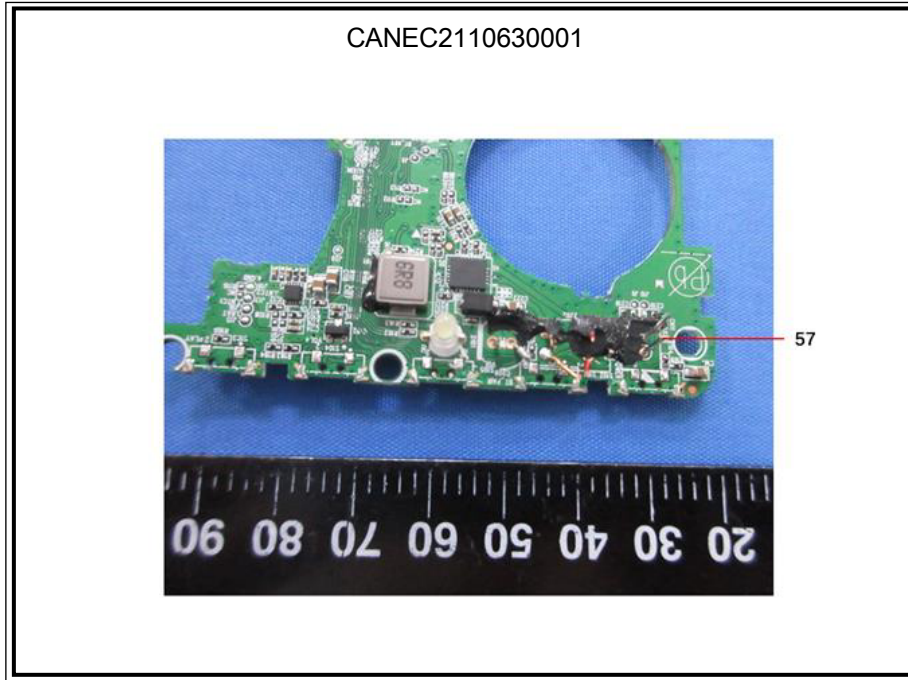


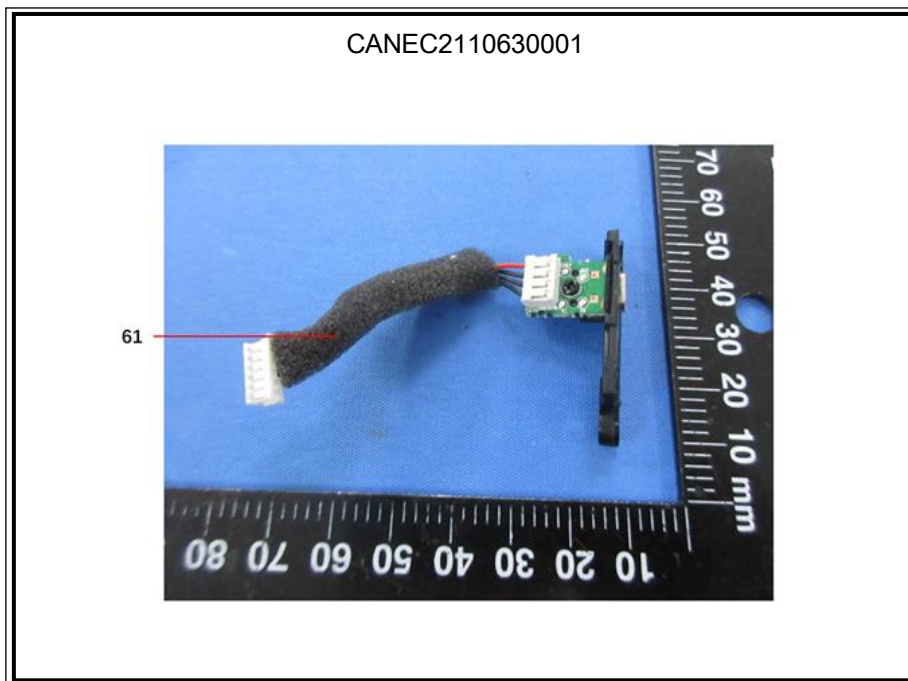
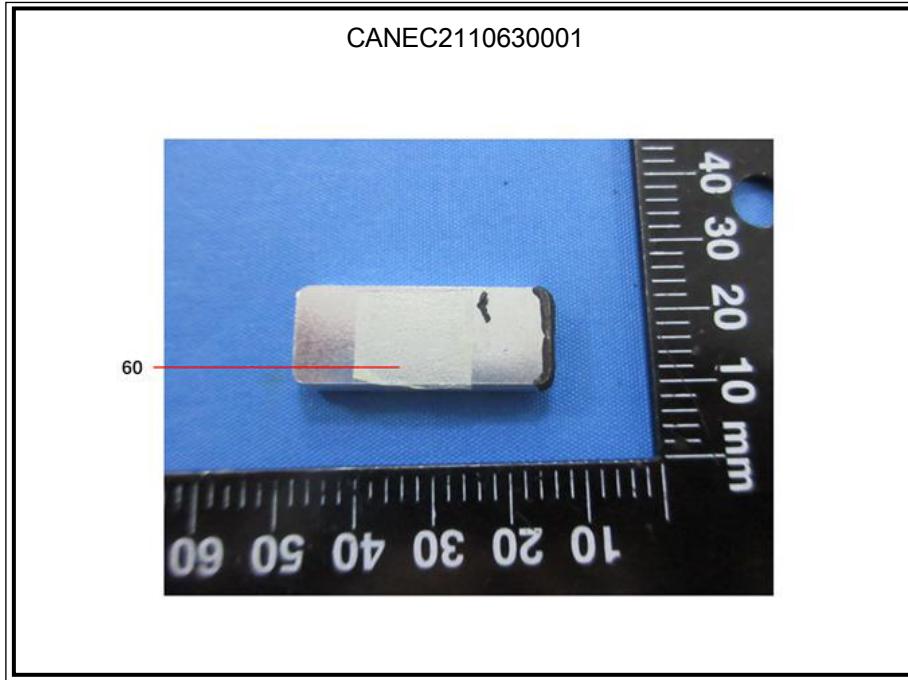




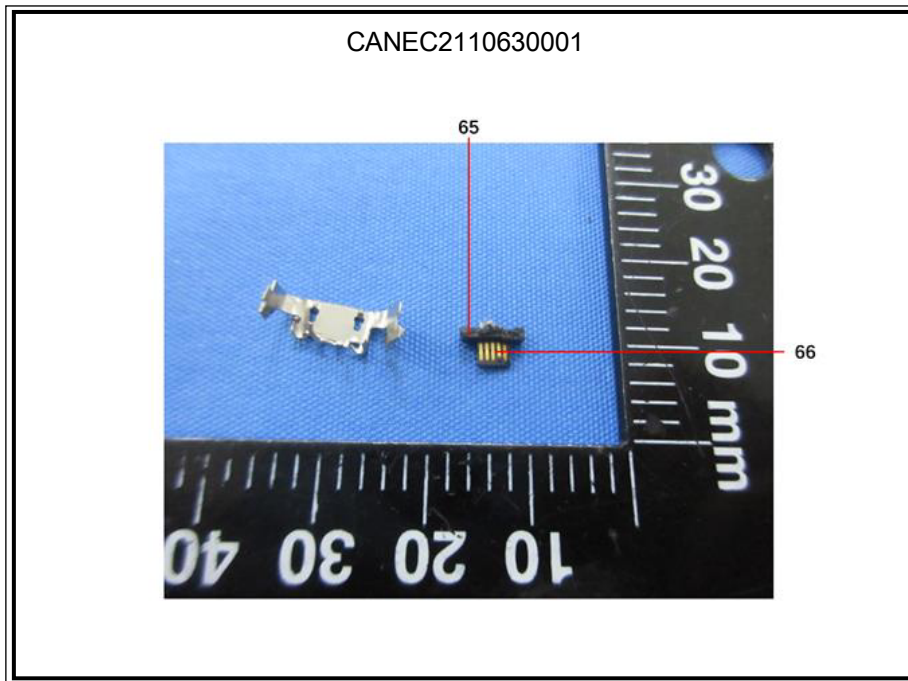
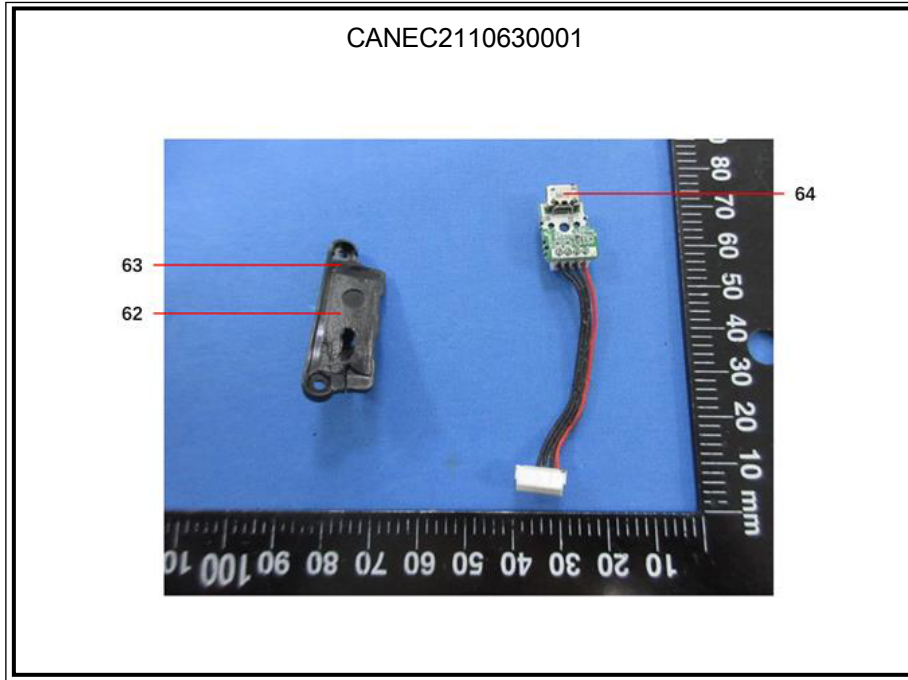


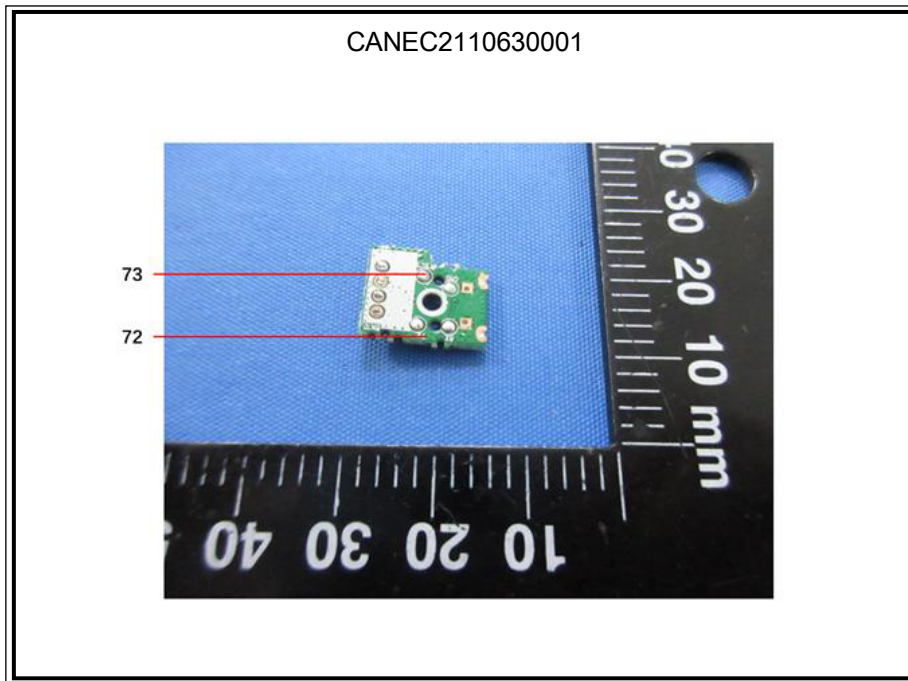
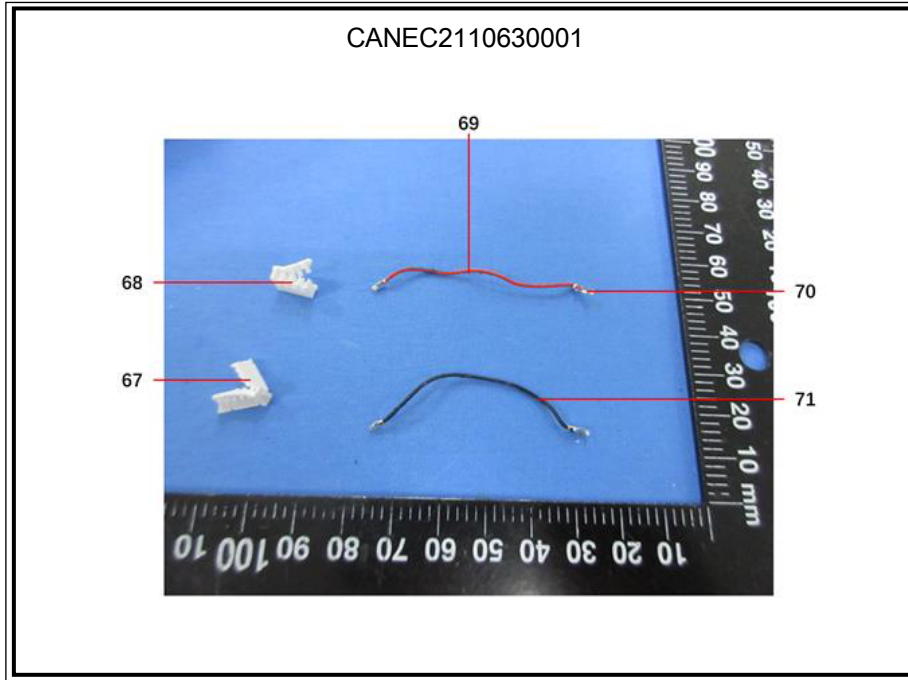




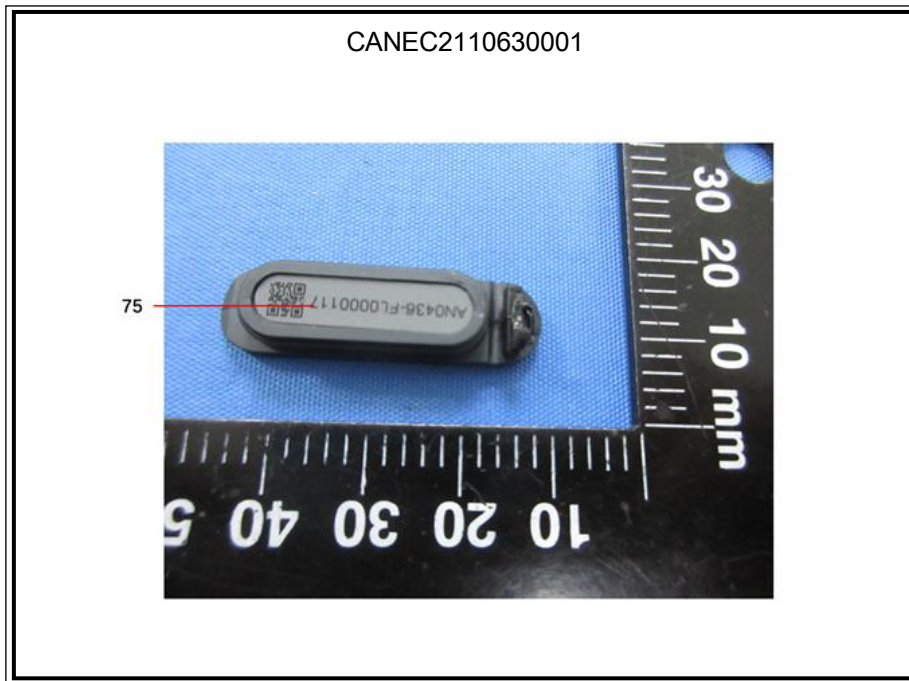
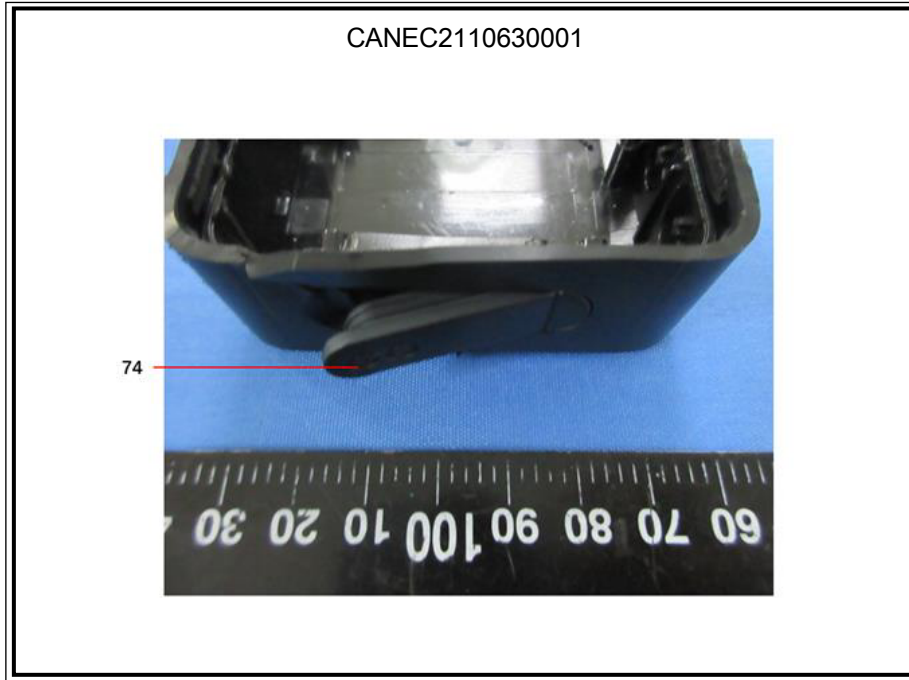


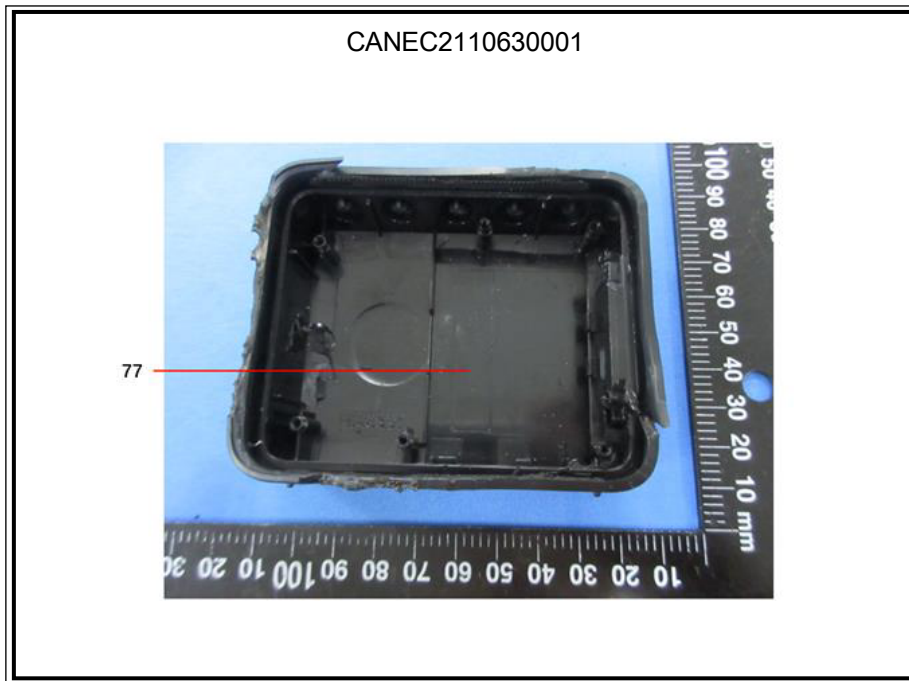
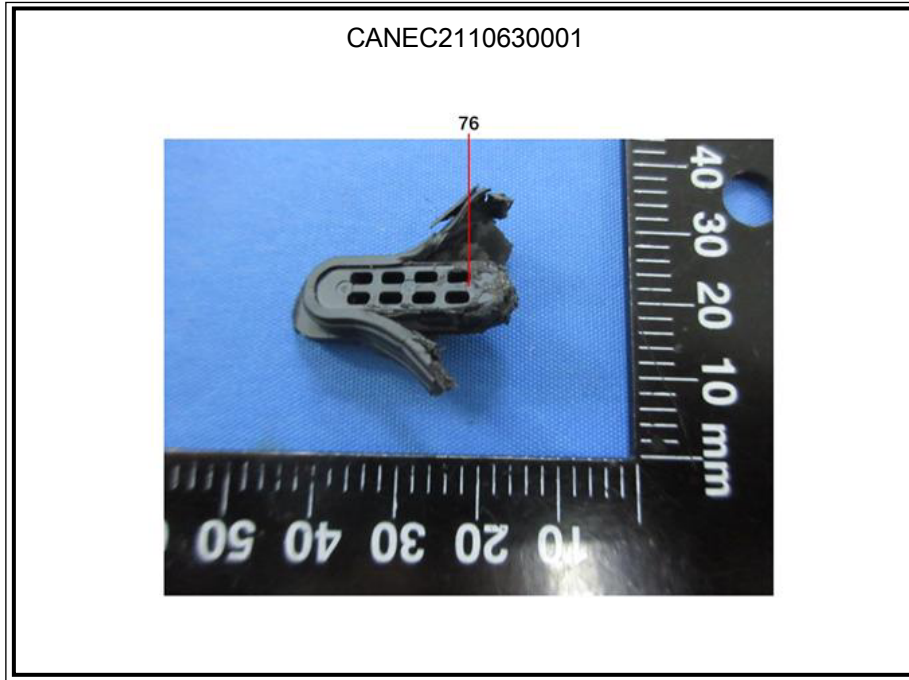


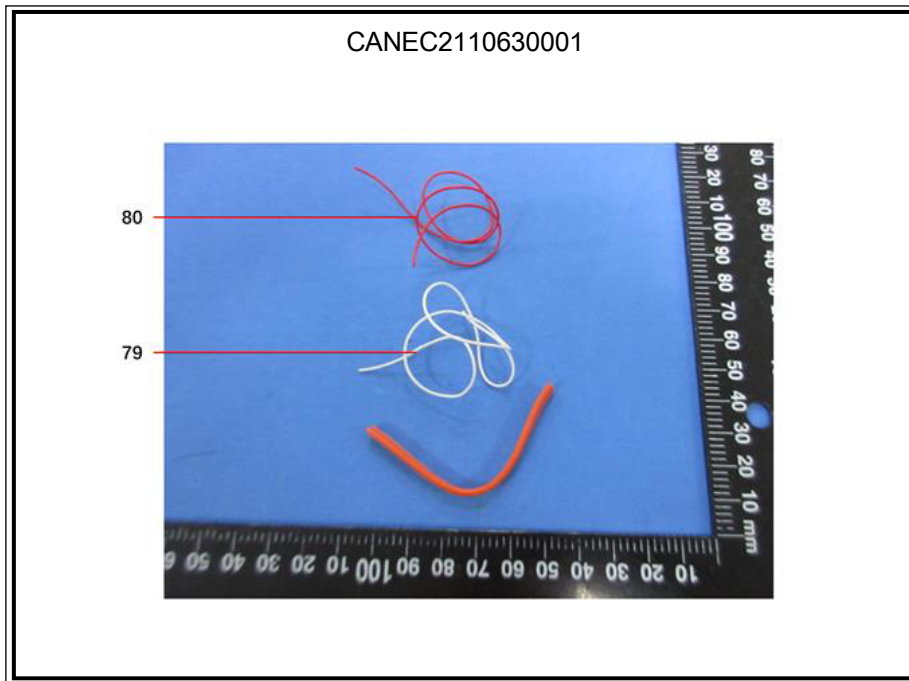
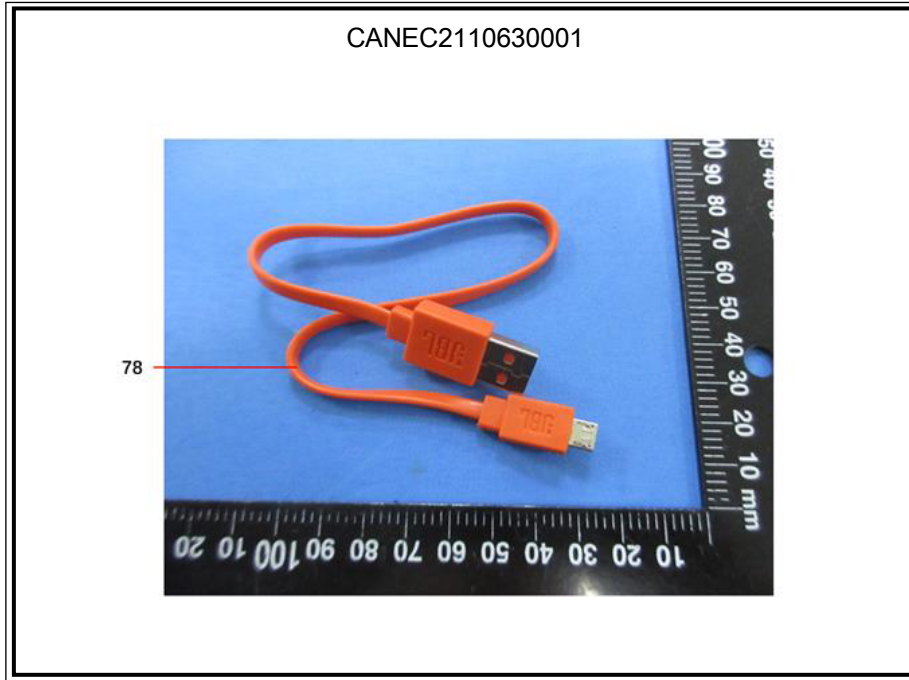




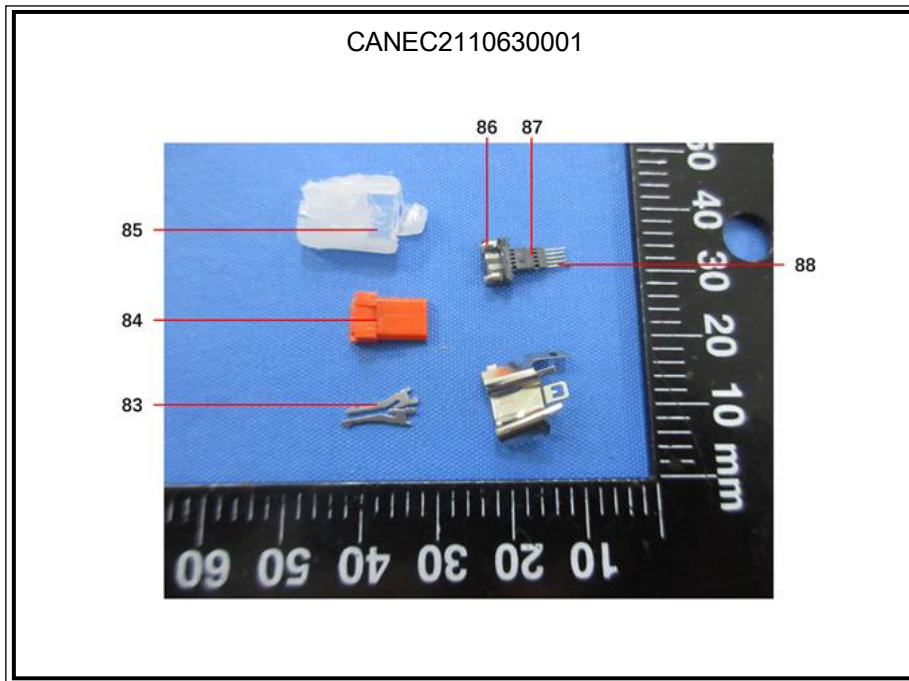
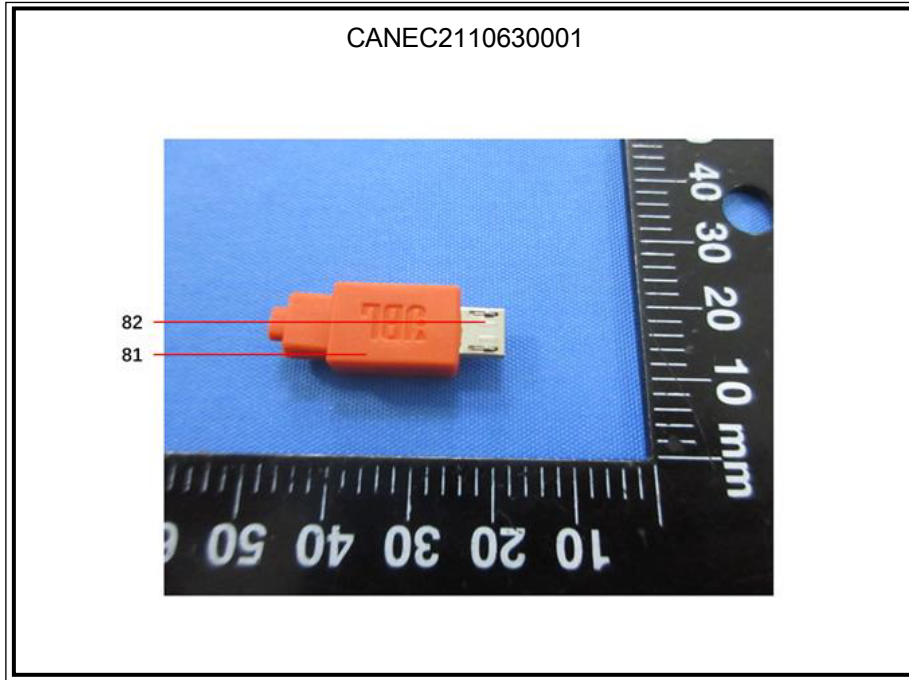


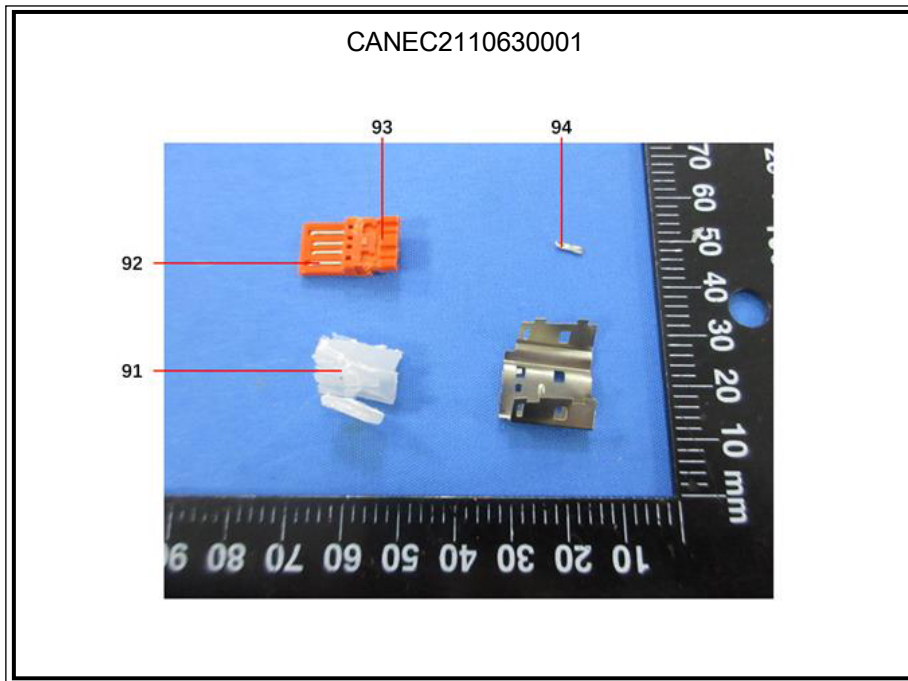
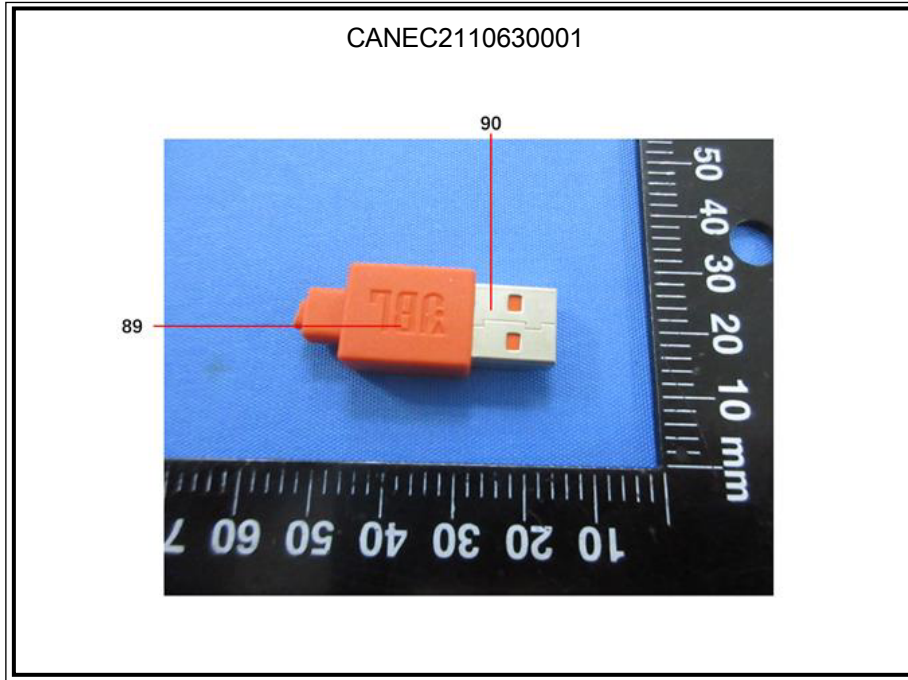








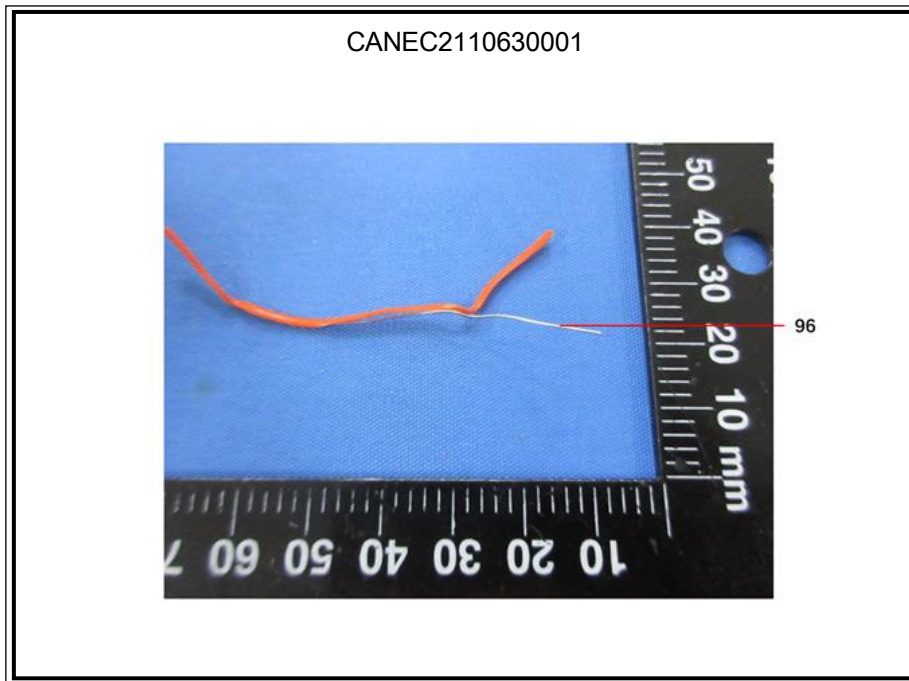
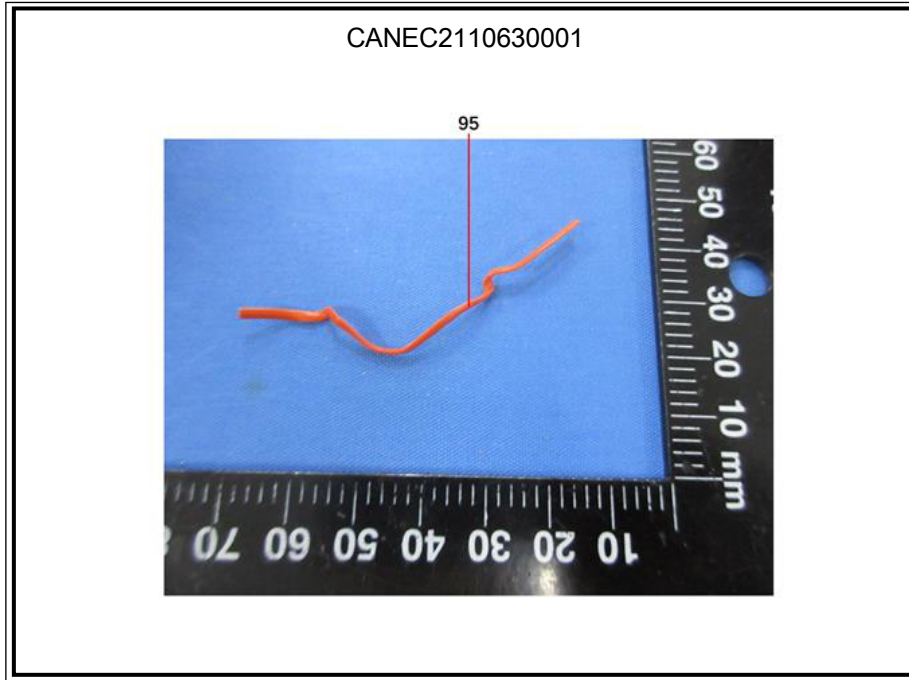


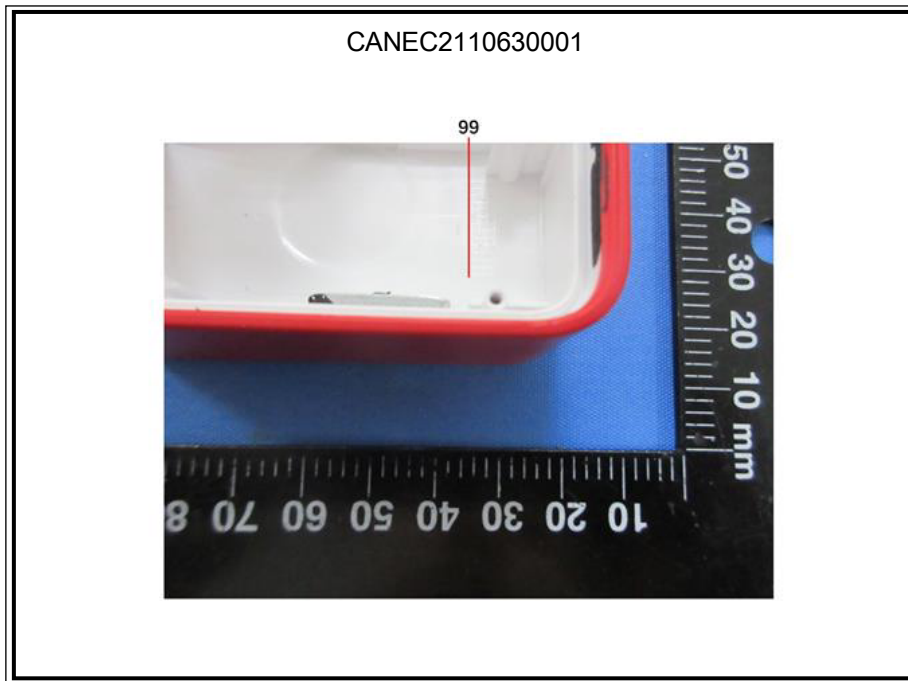
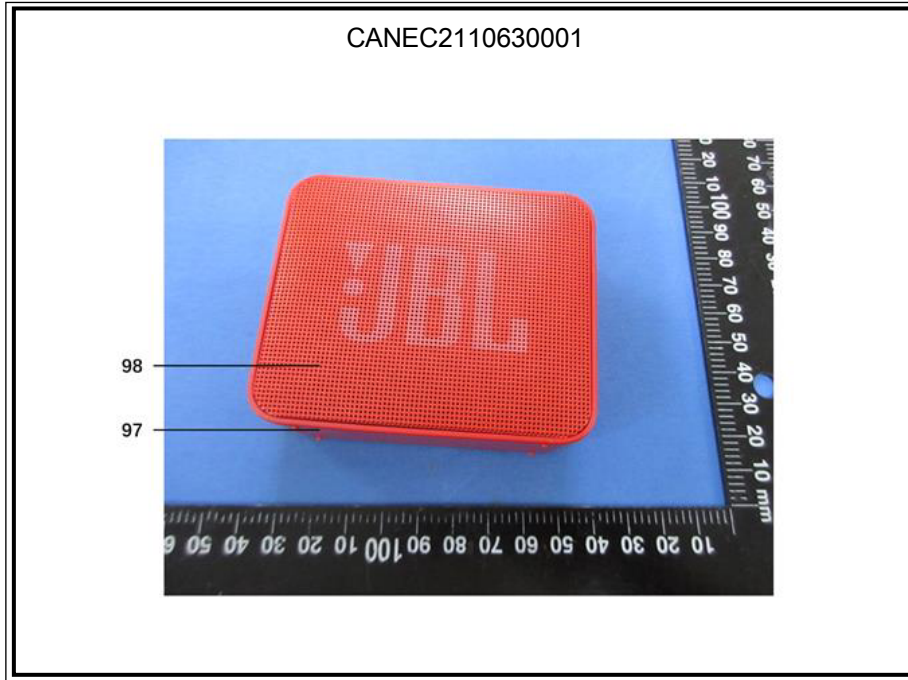


Unless otherwise agreed in writing, this document is issued by the Company subject to its General Conditions of Service printed overleaf, available on request or accessible at <http://www.sgs.com/en/Terms-and-Conditions.aspx> and, for electronic format documents, subject to Terms and Conditions for Electronic Documents at <http://www.sgs.com/en/Terms-and-Conditions/Terms-e-Documents.aspx>. Attention is drawn to the limitation of liability, indemnification and jurisdiction issues defined therein. Any holder of this document is advised that information contained hereon reflects the Company's findings at the time of its intervention only and within the limits of Client's instructions, if any. The Company's sole responsibility is to its Client and this document does not exonerate parties to a transaction from exercising all their rights and obligations under the transaction documents. This document cannot be reproduced except in full, without prior written approval of the Company. Any unauthorized alteration, forgery or falsification of the content or appearance of this document is unlawful and offenders may be prosecuted to the fullest extent of the law. Unless otherwise stated the results shown in this test report refer only to the sample(s) tested.

Attention: To check the authenticity of testing / inspection report & certificate, please contact us at telephone: (86-755) 8307 1443, or email: [CN.Doccheck@sgs.com](mailto:CN.Doccheck@sgs.com)

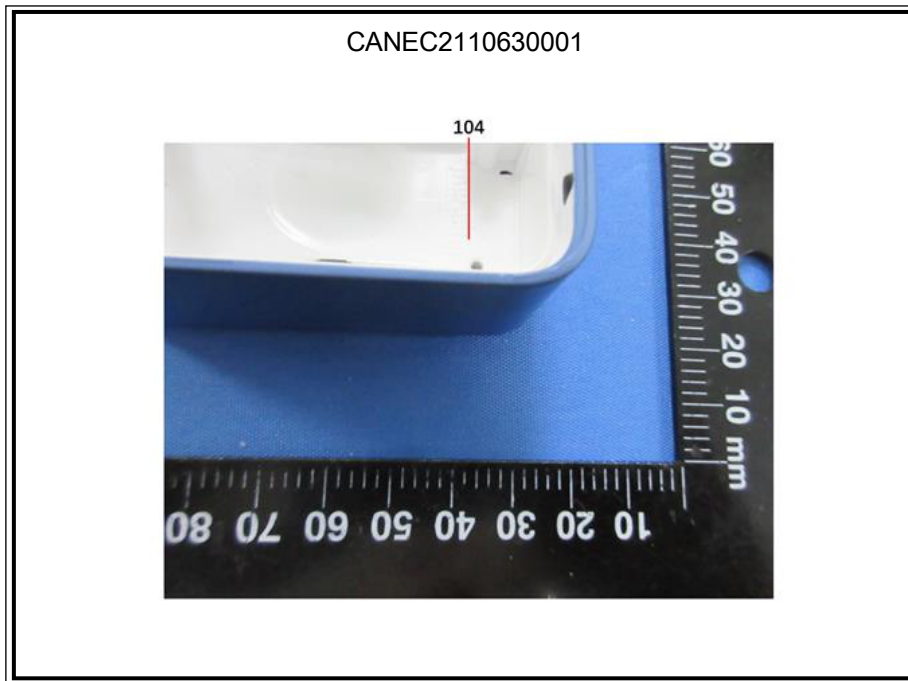
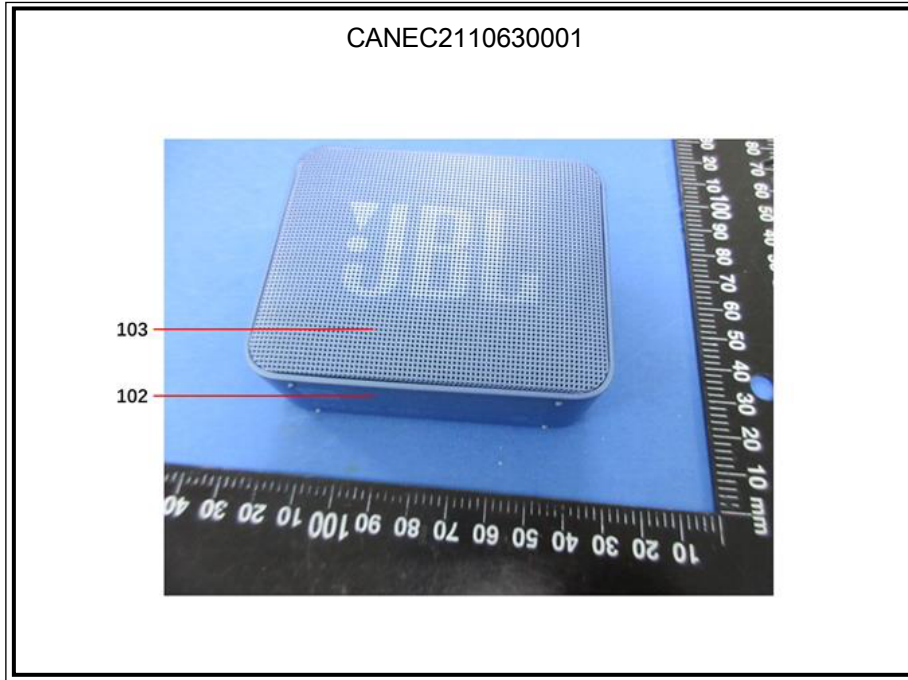




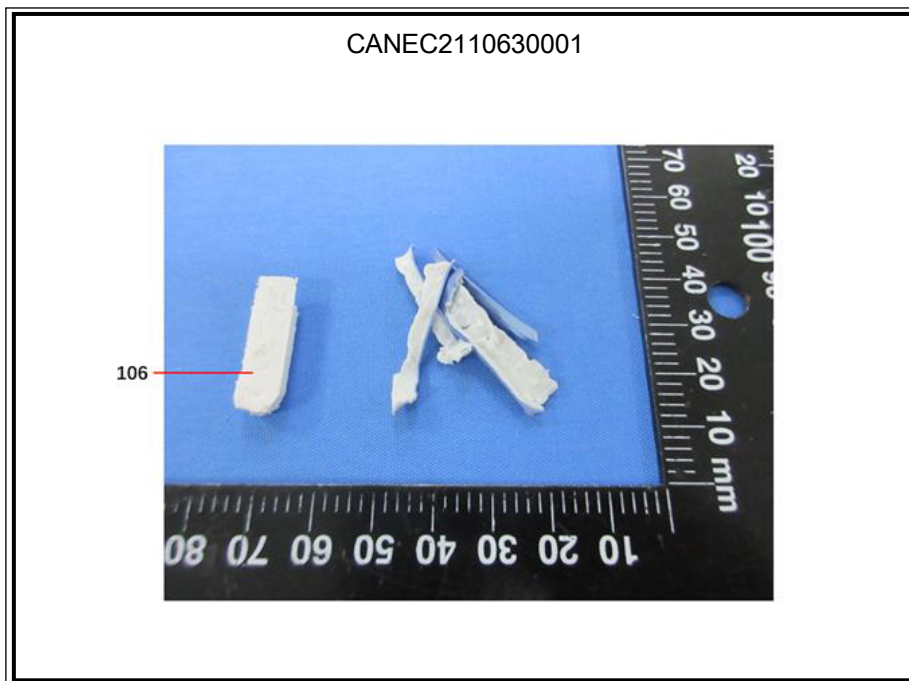
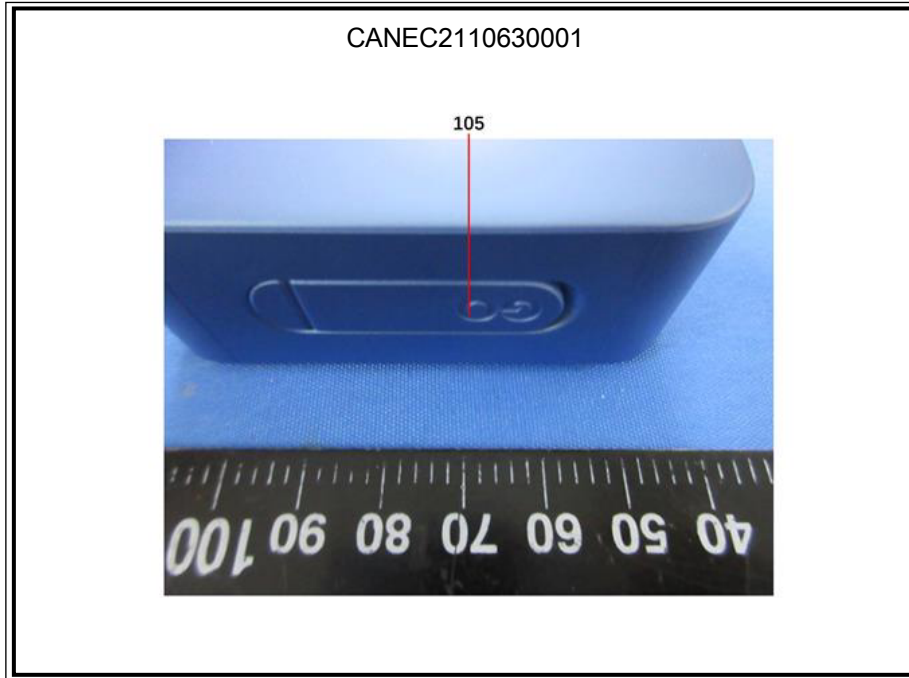




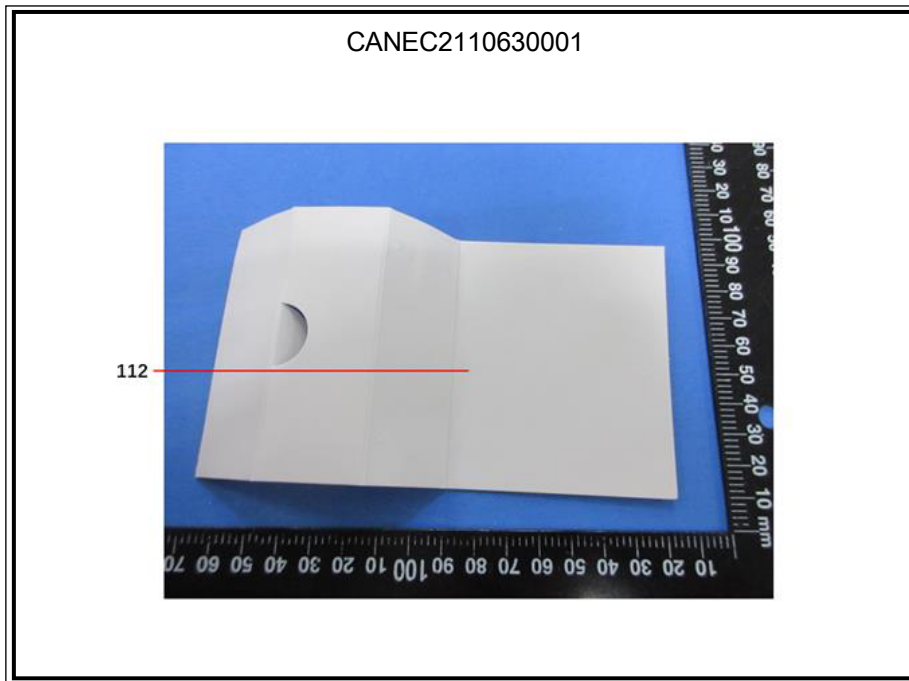
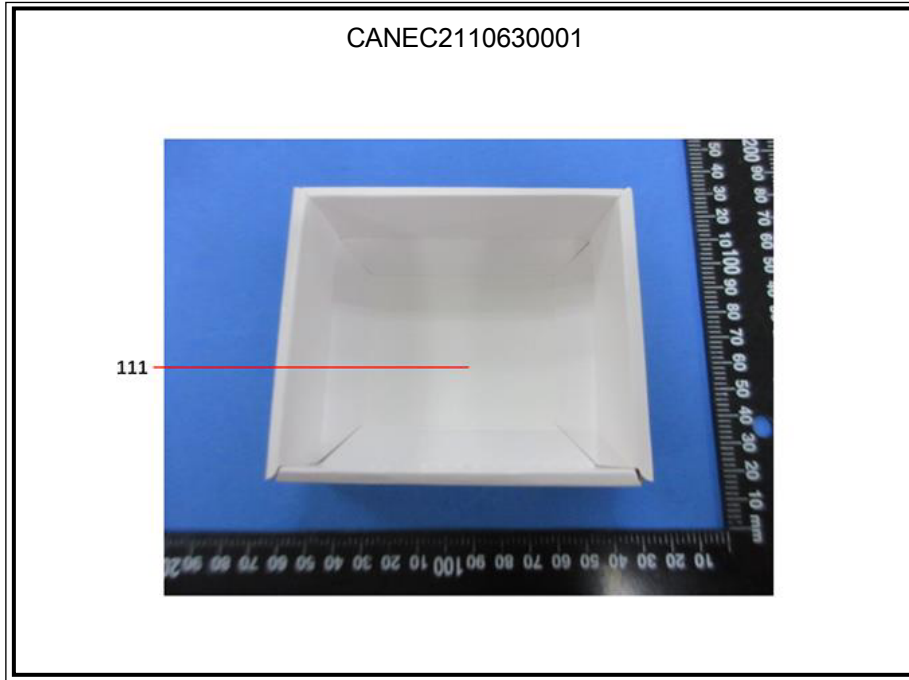




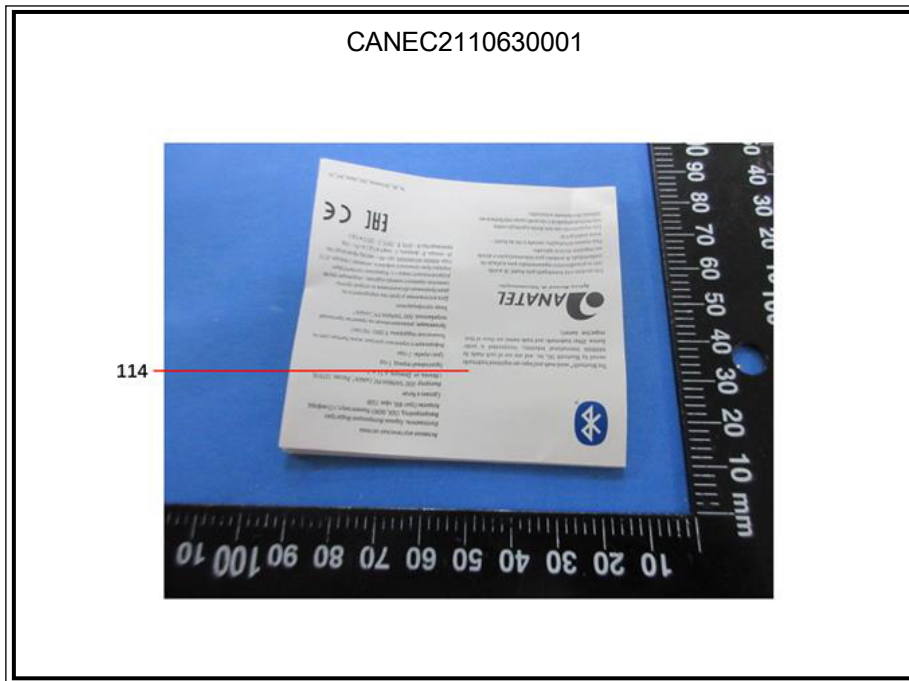
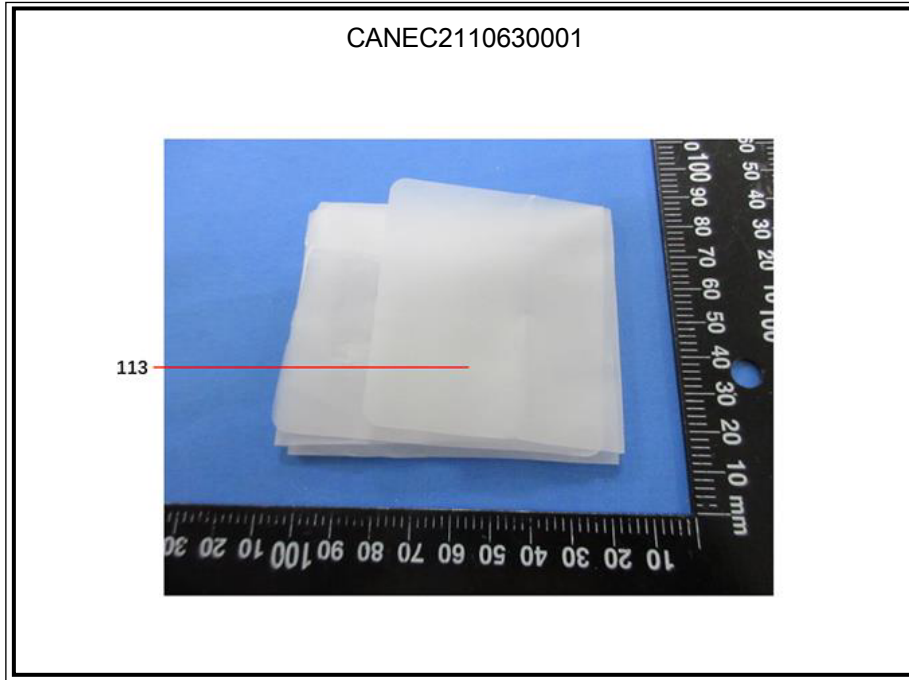




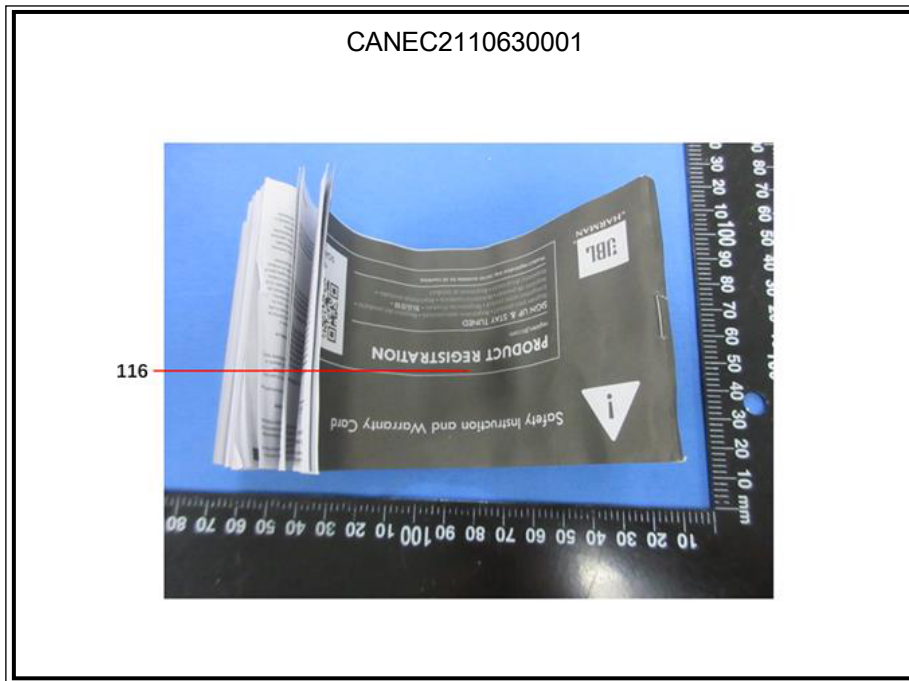
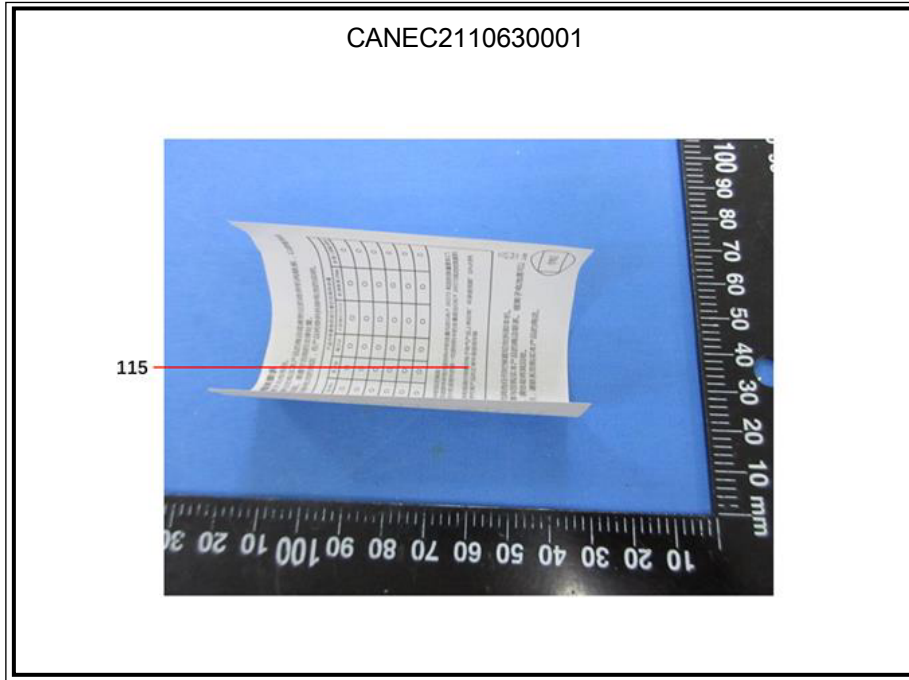


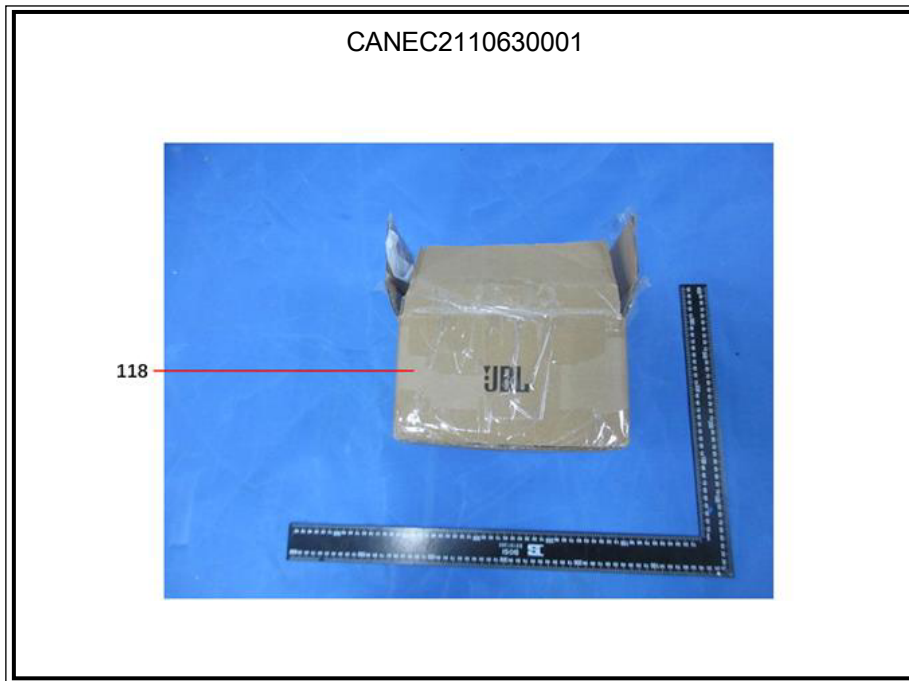
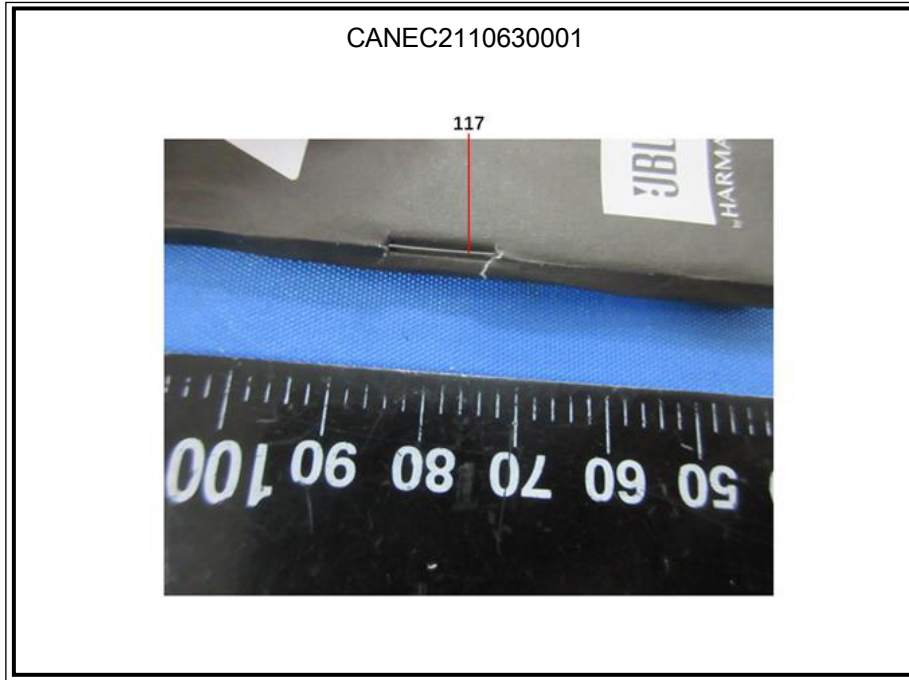














SGS authenticate the photo on original report only

\*\*\* End of Report \*\*\*

